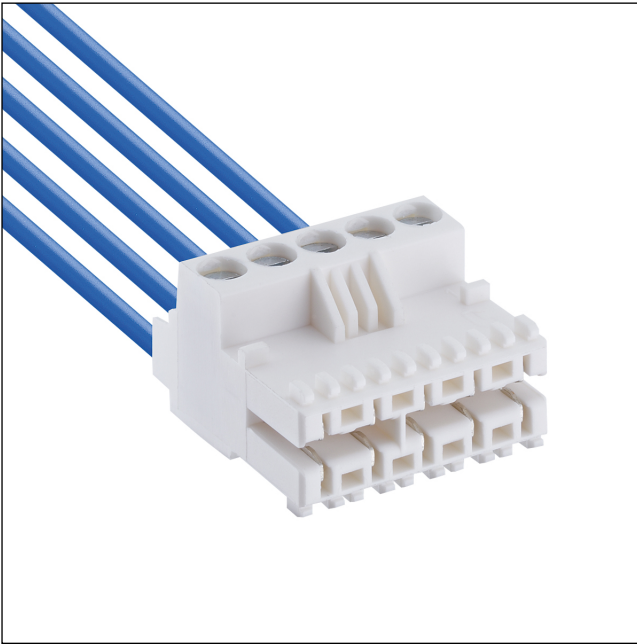


36

3613

RAST 5 connectors, pitch 5.0 mm



RAST 5 connector for direct mating, with screw terminal, with lift clamp with protection against misplacing, with keying rib and closed sides, consecutive placement without loss of pitch

---

State: Active

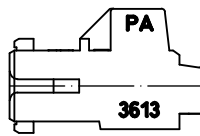
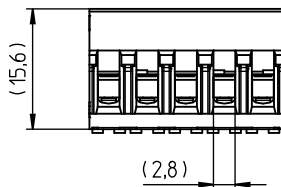
---

Approvals:



36

3613



#### Environmental conditions

|                   |                                                                 |
|-------------------|-----------------------------------------------------------------|
| Temperature range | -40 °C/+125 °C (3613)<br>-40 °C/+130 °C (3613 M08) <sup>1</sup> |
|-------------------|-----------------------------------------------------------------|

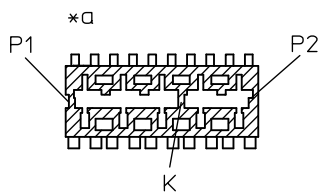
<sup>1</sup> upper limit temperature (insulating body) RTI (electrical) of the UL Yellow Card

#### Materials

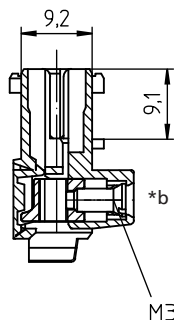
|                 |                                                                                             |
|-----------------|---------------------------------------------------------------------------------------------|
| Insulating body | PA GF, V-2 according to UL94 – 3613<br>PA GF, V-0 according to UL94 – 3613 M08 <sup>1</sup> |
| Contact spring  | CuSn, tin-plated                                                                            |
| Clamp           | CuZn, nickel-plated                                                                         |
| Screw           | steel, zinc-plated and chromatiert                                                          |

<sup>1</sup> M08: component glow wire resistant (GWT 750 °C), testing acc. to IEC 60695-2-11, assessment acc. to IEC 60335-1 (flame < 2 s)


A-A



B-B



#### Mechanical data

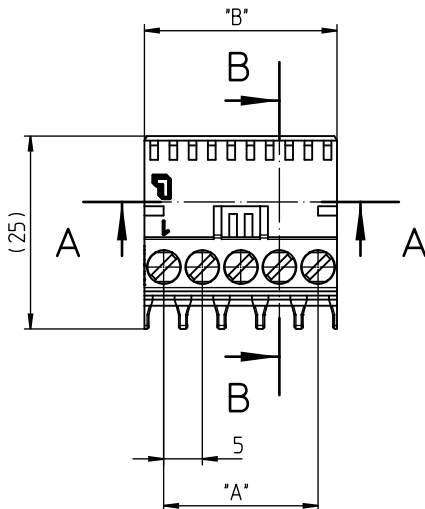
|                          |                                                                                                                                               |
|--------------------------|-----------------------------------------------------------------------------------------------------------------------------------------------|
| Mating with              | Leiterplatte 1,5 ± 0,14 mm                                                                                                                    |
| Insertion force/contact  | ≤ 4,0 N                                                                                                                                       |
| Withdrawal force/contact | ≥ 1,0 N                                                                                                                                       |
| Tightening torque screw  | 0,5 Nm                                                                                                                                        |
| Keying proposals         | at <a href="http://www.lumberg.com">www.lumberg.com</a>  |

#### Connectable conductors for screw clamp

|                                   |                                      |
|-----------------------------------|--------------------------------------|
| Section stranded wire             | 0,14–2,5 mm <sup>2</sup> (AWG 26–14) |
| Section stranded wire with sleeve | 0,25–2,5 mm <sup>2</sup> (AWG 24–14) |
| Section solid wire                | 0,14–4,0 mm <sup>2</sup> (AWG 26–12) |
| Stripping length                  | 8 ± 1 mm                             |

#### Electrical data (at T<sub>amb</sub> 20 °C)

|                       |                                                                                          |
|-----------------------|------------------------------------------------------------------------------------------|
| Contact resistance    | ≤ 5 mΩ                                                                                   |
| Rated current         | 6 A (T <sub>v</sub> 70 °C)                                                               |
| Rated voltage         | 630 V AC (VDE)/250 V DC (UL, CSA) – 3613<br>320 V AC (VDE)/250 V DC (UL, CSA) – 3613 M08 |
| Material group        | I (IEC)/0 (UL) (CTI ≥ 600) – 3613<br>IIIa (IEC)/2 (UL) (CTI ≥ 257) – 3613 M08            |
| Creepage distance     | ≥ 2,6 mm                                                                                 |
| Clearance             | ≥ 2,6 mm                                                                                 |
| Insulation resistance | > 10 GΩ                                                                                  |





36

3613

| Designation | Pole Number | PU (Pieces) | MDQ (Pieces) | Dimensions |        |        |
|-------------|-------------|-------------|--------------|------------|--------|--------|
|             |             |             |              | A (mm)     | B (mm) | C (mm) |
| 3613 02     | 2           | 200         | 1000         | 5          | 9.9    | 7.5    |
| 3613 03     | 3           | 200         | 1000         | 10         | 14.9   | 12.5   |
| 3613 04     | 4           | 200         | 1000         | 15         | 19.9   | 17.5   |
| 3613 05     | 5           | 200         | 1000         | 20         | 24.9   | 22.5   |
| 3613 06     | 6           | 200         | 1000         | 25         | 29.9   | 27.5   |

Designation to be completed by further details (e.g. for keying, color or material options).

**Packaging:**

in bulk, in a cardboard box