

01

0107

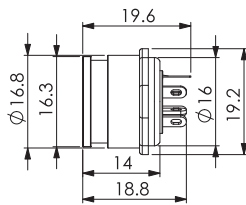
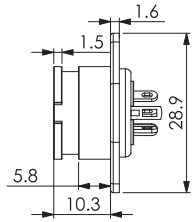
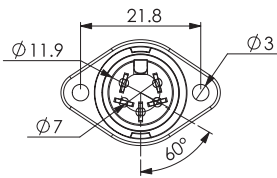
## DIN circular connectors



DIN chassis socket, shielded, with bayonet lock, metal housing, flange and solder terminals

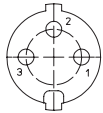
01

0107

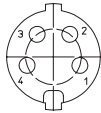


**Pin configurations, solder side view**

DIN 41524

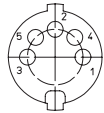


0107 03



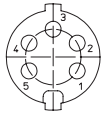
0107 04

DIN 41524



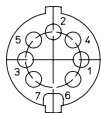
0107 05

DIN 45322



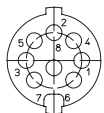
0107 05-1

DIN 45329



0107 07-1

DIN 45326



0107 08-1

**Environmental conditions**

Temperature range -20 °C/+85 °C

**Materials**

Insulating body ABS, V-0 according to UL94  
 Contact spring CuZn, silver-plated  
 Ground contact spring Cu, nickel-plated  
 Housing Zn alloy, nickel-plated

**Electrical data (at T<sub>amb</sub> 20 °C)**

Contact resistance ≤ 30 mΩ (contact spring)  
 ≤ 50 mΩ (housing)  
 Rated current ≤ 4 A  
 Rated voltage 60 V AC  
 Rated impulse voltage 250 V AC RMS/60 s  
 Insulation resistance ≥ 100 MΩ

**Associated products**

Counterparts  
 ☞ 0131 ☞ 0132 ☞ 0134

01

0107

Designation	Pole Number	PU (Pieces)	MDQ (Pieces)
0107 03	3	50	150
0107 04	4	50	150
0107 05	5	50	150
0107 05-1	5	50	150
0107 07-1	7	50	150
0107 08-1	8	50	150

**Packaging:**

in individual plastic bags, in a cardboard box