

15

1501 03

Jack connectors

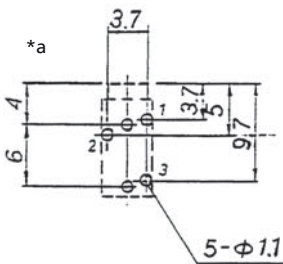
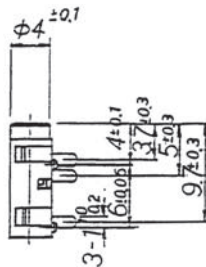
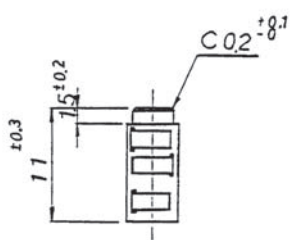
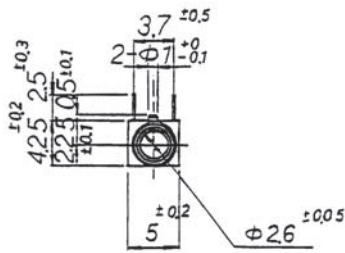


Jack chassis socket acc. to JIS C 6560 JC25J3A, 2.5 mm, 3 poles/stereo, angular version, for printed circuit board

State: Obsolete

15

1501 03



*a printed circuit board layout, solder side view

Environmental conditions

Temperature range -20 °C/+70 °C

Materials

Insulating body PA GF, HB according to UL94
Contact spring CuSn

Mechanical data

Mating cycles ≥ 5000
Insertion force 5–20 N
Withdrawal force 4–20 N

Electrical data (at T_{amb} 20 °C)

Contact resistance ≤ 30 m Ω
Rated current 0,5 A
Rated voltage 34 V AC/DC
Rated impulse voltage 500 V/60 s
Insulation resistance ≥ 100 M Ω

Associated products

Counterparts
☑ KLS 13

15

1501 03

Designation	Pole Number	PU (Pieces)	MDQ (Pieces)
1501 03	3	500	1000

Packaging:

in bulk, in a cardboard box or a plastic bag