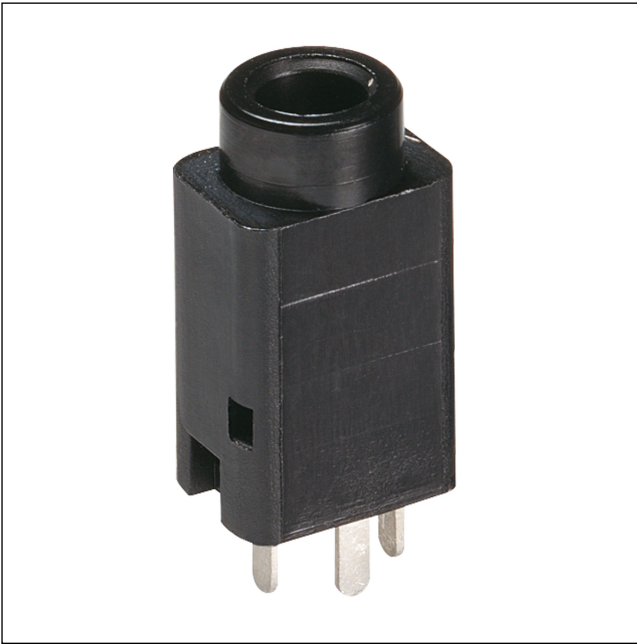


15

1502 01

Jack connectors



Jack chassis socket acc. to JIS C 6560 JC35J3A, 3.5 mm, 3 poles/stereo, upright version, for printed circuit boards

State: Obsolete

15

1502 01

| Designation | Pole Number | PU (Pieces) | MDQ (Pieces) |
|-------------|-------------|-------------|--------------|
| 1502 01 | 3 | 200 | 600 |

Packaging:

in bulk, in a cardboard box or a plastic bag