

15

1503 21

Jack connectors

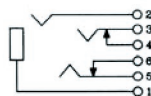
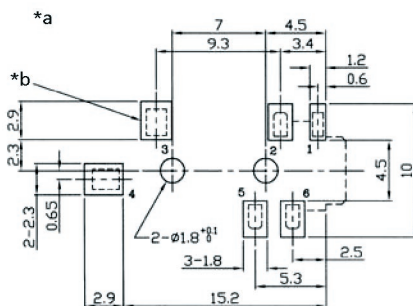
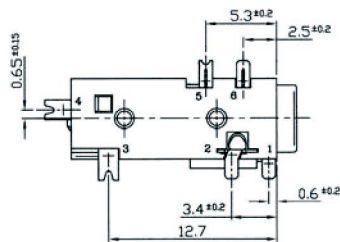
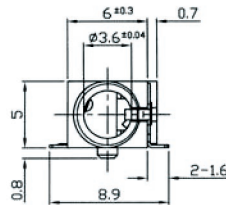
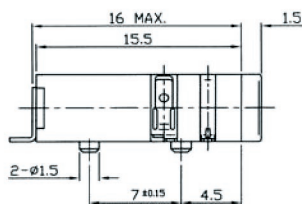
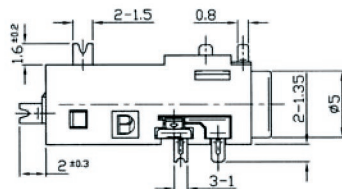


Jack chassis socket according to JEITA RC-5325A, 3.5 mm, 4 poles/stereo, with two break contacts, angular version, for printed circuit boards, surface mount technology (SMT)

State: Phasing out

15

1503 21



Environmental conditions

Temperature range -20 °C/+70 °C

Materials

Insulating body PPA GF, V-0 according to UL94
Contact spring Cu alloy, silver-plated
Cover PA GF, V-0 according to UL94

Mechanical data

Mating cycles 5000¹
Insertion force 3,92–29,4 N
Withdrawal force 3,92–29,4 N

¹ measured with a gauge plug

Electrical data (at T_{amb} 20 °C)

Contact resistance ≤ 30 mΩ
Rated current 1 A
Rated voltage 12 V DC
Rated impulse voltage 500 V/60 s
Insulation resistance ≥ 100 MΩ

Associated products

Counterparts
☞ 1532 02

*a printed circuit board layout, solder side view
*b solder pad

15

1503 21

Designation	Pole Number	PU (Pieces)	MDQ (Pieces)
1503 21 VP3	4	750	750