

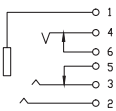
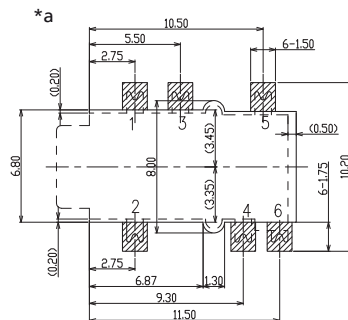
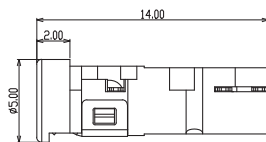
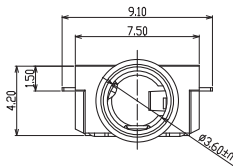
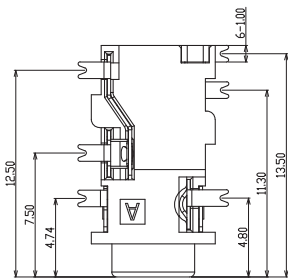
15

1503 28

Jack connectors



Jack chassis socket according to JEITA RC-5325A, 3.5 mm, 4 poles/stereo, with two break contacts, angular version, for printed circuit boards, surface mount technology (SMT), for mid-mount placement



*a printed circuit board layout, components side view

Environmental conditions

Temperature range -25 °C/+70 °C

Materials

Insulating body PA, V-0 according to UL94
 Contact spring CuSn, gold-plated
 Cover PA GF, V-0 according to UL94

Mechanical data

Mating cycles $\geq 5000^1$
 Insertion force 3–30 N²
 Withdrawal force 3–30 N²

¹ measured with a gauge plug

² initial value

Electrical data (at T_{amb} 20 °C)

Contact resistance $\leq 30 \text{ m}\Omega^1$
 Rated current 1 A
 Rated voltage 12 V
 Rated impulse voltage 500 V/60 s
 Insulation resistance $\geq 100 \text{ M}\Omega$

¹ initial value

Associated products

Counterparts
 ☞ 1532 02

15

1503 28

Designation	Pole Number	PU (Pieces)	MDQ (Pieces)
1503 28	4	800	800