

15

1520 02

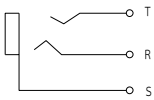
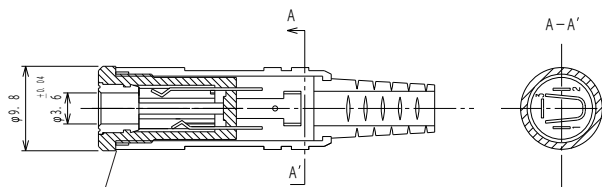
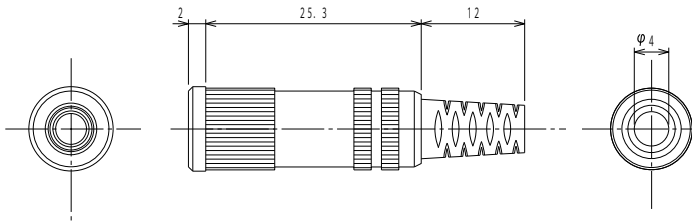
Jack connectors



Jack socket acc. to JIS C 6560 JC35J3A, 3.5 mm, 3 poles/
stereo, straight version, with metal housing, bend
protection and solder terminals

15

1520 02



Environmental conditions

Temperature range -10 °C/+50 °C

Materials

Insulating body PA, HB according to UL94
 Contact spring Cu alloy, nickel-plated
 Housing Cu alloy, nickel-plated
 Bend protection sleeve PVC

Mechanical data

Mating cycles 3000
 Insertion force 4–20 N¹
 Withdrawal force 4–20 N¹
¹ measured with a gauge plug

Connectable conductors for solder area

Cable diameter 4 mm

Electrical data (at T_{amb} 20 °C)

Contact resistance ≤ 50 mΩ
 Rated current 1 A
 Rated voltage 12 V DC
 Rated impulse voltage 500 V/60 s
 Insulation resistance ≥ 100 MΩ

Associated products

Counterparts
 ☞ 1532 07 ☞ KLS 40 ☞ KLS 44
 ☞ WKLS 40

15

1520 02

Designation	Pole Number	PU (Pieces)	MDQ (Pieces)
1520 02	3	100	500

Packaging:

in bulk, in a cardboard box or a plastic bag