

15

1522 02

Jack connectors

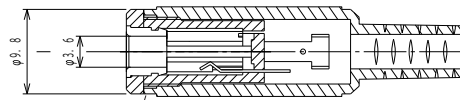
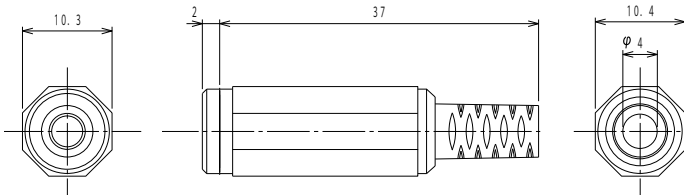


Jack socket acc. to JIS C 6560 JC35J2A, 3.5 mm, 2 poles/
mono, straight version, with bend protection and solder
terminals

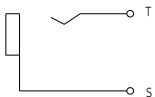
State: New

15

1522 02



M8 x 1



Environmental conditions

Temperature range -10 °C/+50 °C

Materials

Insulating body PA, HB according to UL94
Contact Cu alloy, nickel-plated
Housing PE

Mechanical data

Mating cycles 3000
Insertion force 4–20 N¹
Withdrawal force 4–20 N¹

¹ measured with a gauge plug

Connectable conductors for solder area

Cable diameter 4 mm

Electrical data (at T_{amb} 20 °C)

Contact resistance ≤ 50 mΩ
Rated current 1 A
Rated voltage 12 V DC
Rated impulse voltage 500 V/60 s
Insulation resistance ≥ 100 MΩ

Associated products

Counterparts
[☞ 1532 04](#) [☞ 1532 06](#) [☞ KLS 2](#)
[☞ KLS 22](#) [☞ WKLS 2](#)

15

1522 02

Designation	Pole Number	PU (Pieces)	MDQ (Pieces)
1522 02	2	100	500

Packaging:

in bulk, in a cardboard box or a plastic bag