

15

1522 03

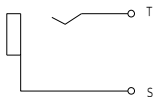
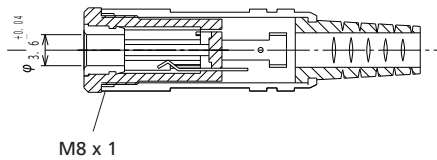
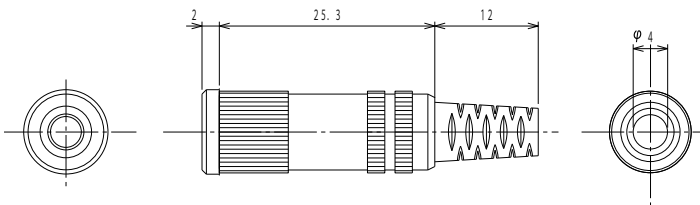
Jack connectors



Jack socket acc. to JIS C 6560 JC35J2A, 3.5 mm, 2 poles/
mono, straight version, with metal housing, bend
protection and solder terminals

15

1522 03



Environmental conditions

Temperature range -10 °C/+50 °C

Materials

Insulating body	PA, HB according to UL94
Contact	Cu alloy, nickel-plated
Housing	Cu alloy, nickel-plated
Bend protection sleeve	PVC

Mechanical data

Mating cycles	3000
Insertion force	4–20 N ¹
Withdrawal force	4–20 N ¹

¹ measured with a gauge plug

Connectable conductors for solder area

Cable diameter 4 mm

Electrical data (at T_{amb} 20 °C)

Contact resistance	≤ 50 mΩ
Rated current	1 A
Rated voltage	12 V DC
Rated impulse voltage	500 V/60 s
Insulation resistance	≥ 100 MΩ

Associated products

Counterparts
 ☞ 1532 06 ☞ KLS 2 ☞ KLS 22
 ☞ WKLS 2

15

1522 03

Designation	Pole Number	PU (Pieces)	MDQ (Pieces)
1522 03	2	100	500

Packaging:

in bulk, in a cardboard box or a plastic bag