

16

1613 20

Power supply connectors

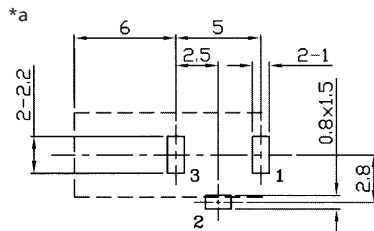
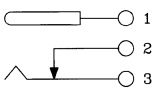
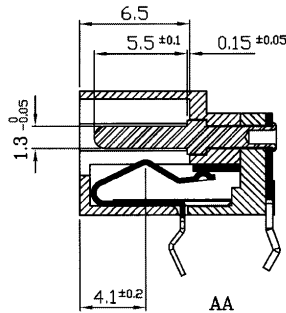
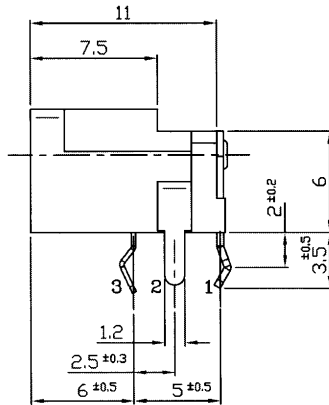
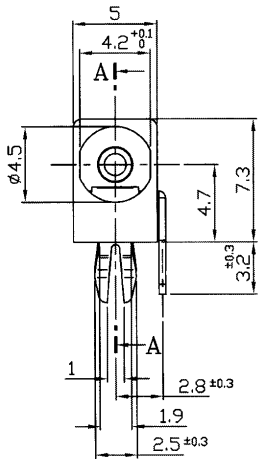


Power supply chassis socket, angular version, with break contact, for printed circuit boards

State: Obsolete

16

1613 20



Environmental conditions

Temperature range -20 °C/+70 °C

Materials

Insulating body	PBT GF
Contact spring	Cu alloy, silver-plated
Contact pin	CuZn, nickel-plated
Cover	PC

Mechanical data

Diameter opening	4.5 mm
Diameter center pin	1.3 mm
Mating cycles	≥ 5000
Insertion force	4–20 N
Withdrawal force	4–20 N

Electrical data (at T_{amb} 20 °C)

Contact resistance	≤ 30 mΩ
Rated current	0.5 A
Rated voltage	6 V DC
Rated impulse voltage	250 V/60 s
Insulation resistance	≥ 100 MΩ

Associated products

Counterparts
☑ NES/J 135

*a printed circuit board layout, components side view

16

1613 20

Designation	Pole Number	PU (Pieces)	MDQ (Pieces)
1613 20	2	250	500

Packaging:

in bulk, in a cardboard box or a plastic bag