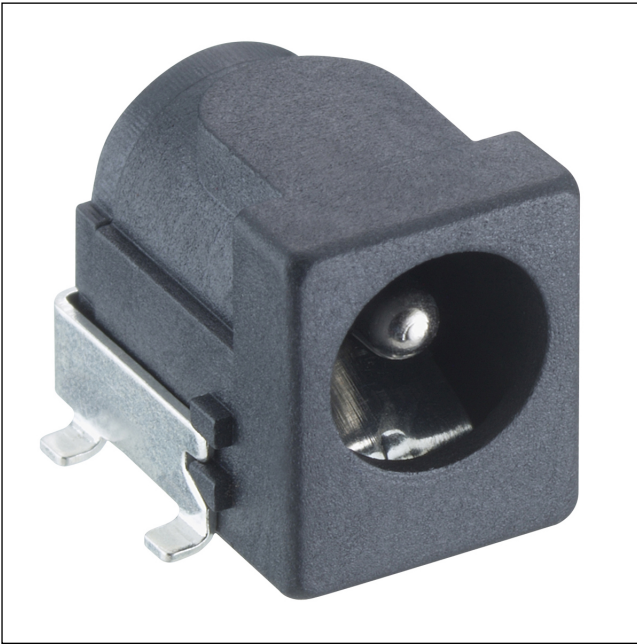


16

1613 33

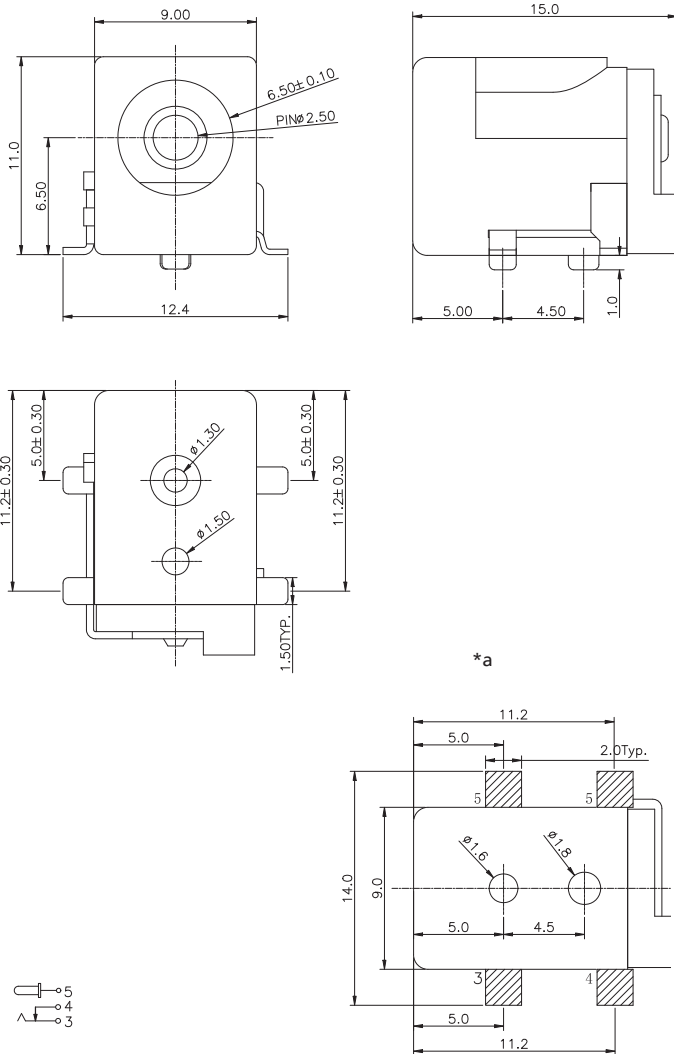
## Power supply connectors



Power supply chassis socket, angular version, with break contact, for printed circuit boards, surface mounting technology (SMT)

16

1613 33



**Environmental conditions**

Temperature range -25 °C/+85 °C

**Materials**

Insulating body LCP, V-0 according to UL94  
Contact CuZn/CuSn, silver/nickel-plated

**Mechanical data**

Diameter opening 6.5 mm  
Diameter center pin 2.5 mm  
Mating cycles 5000  
Insertion force 3–30 N  
Withdrawal force 3–30 N

**Electrical data (at T<sub>amb</sub> 20 °C)**

Contact resistance ≤ 30 mΩ  
Rated current 3 A  
Rated voltage 24 V  
Rated impulse voltage 500 V  
Insulation resistance ≥ 100 MΩ

**Associated products**

Counterparts  
 ↗ 1633 04      ↗ 1634 02      ↗ NES/J 25  
 ↗ NES/J 250      ↗ XNES/J 250

16

1613 33

Designation	Pole Number	PU (Pieces)	MDQ (Pieces)
1613 33 VP3	2	250	500

**Packaging:**

on reel (1613 33 VP3)