

16

1614 17

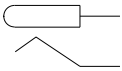
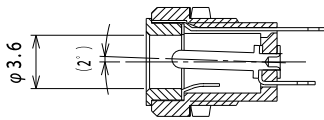
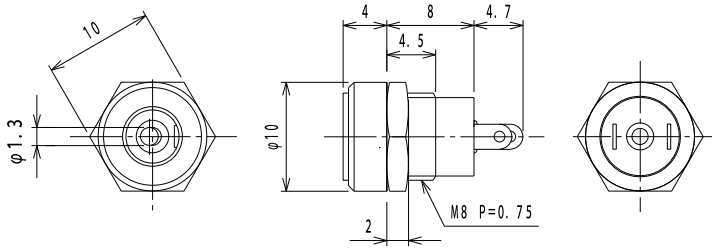
## Power supply connectors



Power supply chassis socket, straight version, with solder eyes, for front side mounting

16

1614 17



#### Environmental conditions

Temperature range -20 °C/+70 °C

#### Materials

Insulating body PA, V-2 according to UL94  
Contact CuZn, nickel-plated  
Hexagonal nut steel, nickel-plated

#### Mechanical data

Diameter opening 3.6 mm  
Diameter center pin 1.3 mm  
Mating cycles  $\geq 5000$   
Insertion force  $\leq 30$  N  
Withdrawal force 3–30 N

#### Electrical data (at $T_{amb}$ 20 °C)

Contact resistance  $\leq 30$  m $\Omega$   
Rated current 0.5 A  
Rated voltage 12 V DC  
Rated impulse voltage 500 V/60 s  
Insulation resistance  $\geq 100$  M $\Omega$

#### Associated products

Counterparts  
☑ NES/J 135

16

1614 17

Designation	Pole Number	PU (Pieces)	MDQ (Pieces)
1614 17	2	250	500

**Packaging:**

in bulk, in a cardboard box or a plastic bag