

16

1614 20

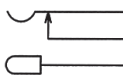
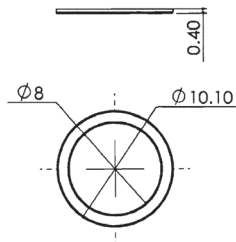
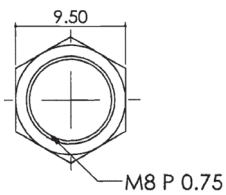
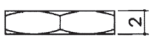
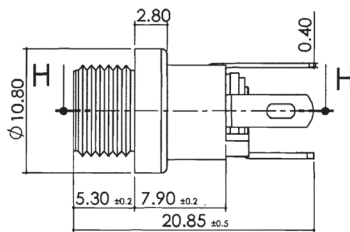
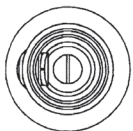
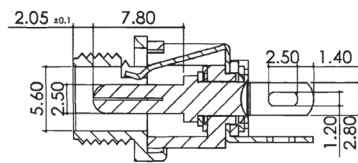
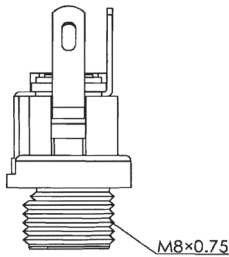
Power supply connectors



Power supply chassis socket,
for plugs 5.5 mm x 2.5 mm, straight version, with break
contact and solder eyes, for back side mounting

16

1614 20



Environmental conditions

Temperature range -20 °C/+70 °C

Materials

Contact	CuZn/CuSn, nickel-plated/silver-plated
Insulation	PF
Hexagonal nut	CuZn, nickel-plated
Washer	steel, nickel-plated

Mechanical data

Diameter opening	5.6 mm
Diameter center pin	2.5 mm
Mating cycles	≥ 5000
Insertion force	≤ 30 N ¹
Withdrawal force	3–30 N ¹

¹ measured with a gauge plug

Electrical data (at T_{amb} 20 °C)

Contact resistance	≤ 50 mΩ
Rated current	1 A
Rated voltage	12 V DC
Rated impulse voltage	250 V/60 s
Insulation resistance	≥ 100 MΩ

Associated products

Counterparts		
☞ 1633 04	☞ 1634 02	☞ NEB/J 25
☞ NES/J 25	☞ NES/J 250	☞ XNES/J 250

16

1614 20

Designation	Pole Number	PU (Pieces)	MDQ (Pieces)
1614 20	2	250	500

Packaging:

in bulk, in a cardboard box or a plastic bag