

16

1614 23

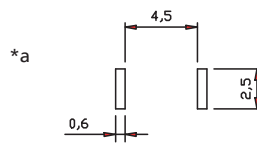
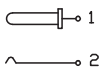
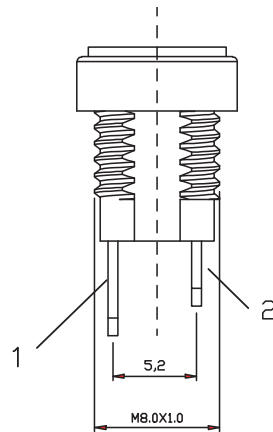
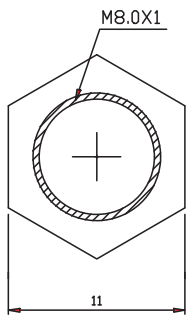
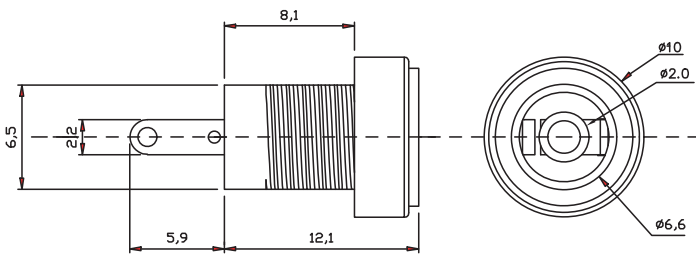
Power supply connectors



Power supply chassis socket, straight version, with solder eyes, for printed circuit boards, for front side mounting

16

1614 23



*a printed circuit board layout

Environmental conditions

Temperature range -30 °C/+70 °C

Materials

Insulating body PA, V-0 according to UL94
 Contact spring CuZn, nickel-plated
 Contact pin CuZn, nickel-plated
 Hexagonal nut CuZn, nickel-plated

Mechanical data

Diameter opening 6.6 mm
 Diameter center pin 2.0 mm
 Mating cycles 5000¹
 Insertion force 3–30 N
 Withdrawal force 3–30 N

¹ gemessen mit einem Lehrenstecker

Electrical data (at T_{amb} 20 °C)

Contact resistance ≤ 30 mΩ
 Rated current 2 A
 Rated voltage 30 V
 Rated impulse voltage 500 V/60 s
 Insulation resistance ≥ 100 MΩ

Associated products

Counterparts
 ☞ 1633 02 ☞ 1633 03 ☞ NES/J 21
 ☞ NES/J 21 W ☞ NES/J 210 ☞ XNES/J 210

16

1614 23

Designation	Pole Number	PU (Pieces)	MDQ (Pieces)
1614 23	2	300	900

Packaging:

in bulk, in a cardboard box or a plastic bag