

16

1614 24

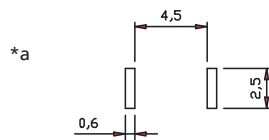
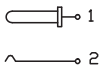
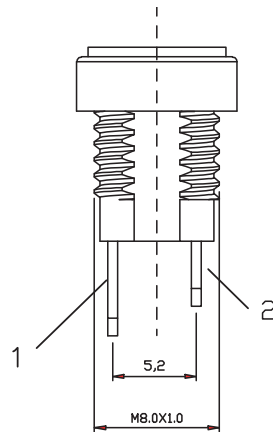
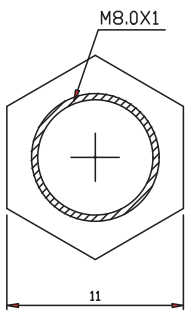
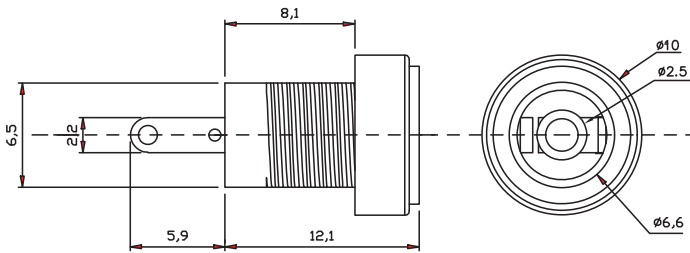
Power supply connectors



Power supply chassis socket, straight version, with solder eyes, for printed circuit boards, for front side mounting

16

1614 24



*a printed circuit board layout

Environmental conditions

Temperature range -30 °C/+70 °C

Materials

Insulating body	PA, V-0 according to UL94
Contact spring	CuZn, nickel-plated
Contact pin	CuZn, nickel-plated
Hexagonal nut	CuZn, nickel-plated

Mechanical data






Diameter opening	6.6 mm
Diameter center pin	2.5 mm
Mating cycles	5000 ¹
Insertion force	3–30 N
Withdrawal force	3–30 N

¹ gemessen mit einem Lehrenstecker

Electrical data (at T_{amb} 20 °C)

Contact resistance	≤ 30 mΩ
Rated current	2 A
Rated voltage	30 V
Rated impulse voltage	500 V/60 s
Insulation resistance	≥ 100 MΩ

Associated products

Counterparts			
 1633 04	 1634 02	 NES/J 25	
 NES/J 250	 XNES/J 250		

16

1614 24

Designation	Pole Number	PU (Pieces)	MDQ (Pieces)
1614 24	2	300	900

Packaging:

in bulk, in a cardboard box or a plastic bag