

16

1637 04

Power supply connectors

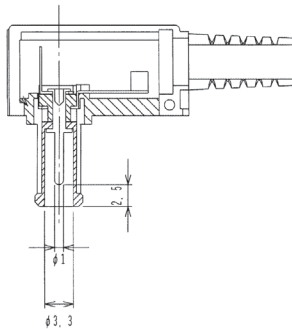
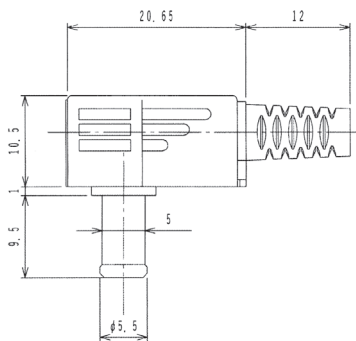
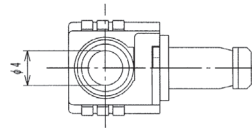
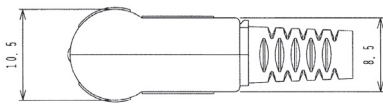


Power supply plug acc. to JEITA RC-5320A JSBP4, angular version, with solder eyes and bend protection

State: New

16

1637 04



Environmental conditions

Temperature range -20 °C/+70 °C

Materials

Insulating body	PC
Contact	CuZn, nickel-plated
Insulation	POM
Housing	PP/POM
Bend protection sleeve	PVC

Mechanical data

Outer diameter	5,5 mm
Inner diameter	3,3 mm
Diameter center pin	1,0 mm

Connectable conductors for solder area

Cable diameter 4 mm

Electrical data (at T_{amb} 20 °C)

Rated current	2 A
Rated voltage	13,5 V DC
Rated impulse voltage	500 V/60 s
Insulation resistance	≥ 100 MΩ

16

1637 04

Designation	Pole Number	PU (Pieces)	MDQ (Pieces)
1637 04	2	250	500