

24

2410 01

USB and IEEE 1394 connectors



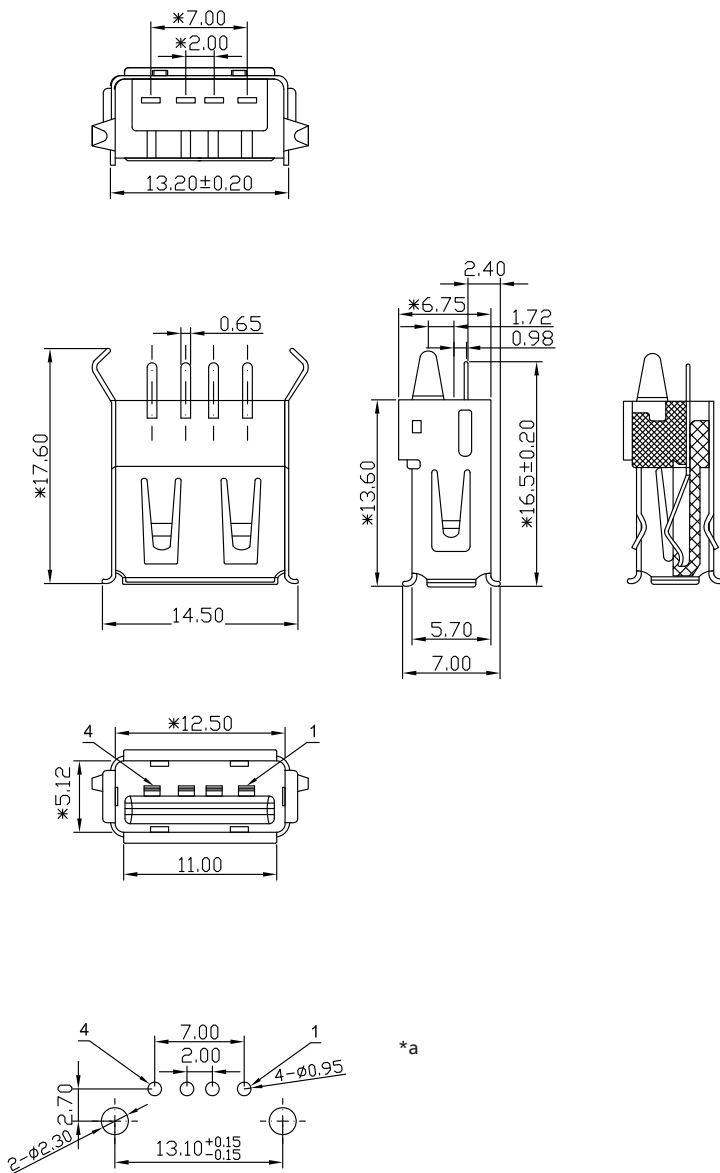
USB 2.0 chassis socket type A, upright version, for printed circuit boards

---

State:   Obsolete

---

24 2410 01



#### Environmental conditions

Temperature range -45 °C/+85 °C

#### Materials

Insulating body PBT GF, V-0 according to UL94  
Contact spring CuSn, gold-plated, tin-plated in solder area  
Housing CuZn, tin-plated  
Cover PBT, VO according to UL94

#### Mechanical data

Mating cycles 1500  
Insertion force ≤ 35 N  
Withdrawal force ≥ 10 N

#### Electrical data (at T<sub>amb</sub> 20 °C)

Contact resistance ≤ 30 mΩ  
Rated current ≤ 1,5 A  
Rated voltage 30 V  
Rated impulse voltage 500 V/60 s  
Insulation resistance ≥ 1 GΩ

#### Associated products

Counterparts  
☞ 2410 07 ☞ 2410 08 ☞ 2431  
☞ 2480 ☞ 2482

Accessories  
☞ 2412 01

\*a printed circuit board layout, solder side view

24

2410 01

Designation	Pole Number	PU (Pieces)	MDQ (Pieces)
2410 01	4	120	600

**Packaging:**

in a tray