

24

2410 10

USB and IEEE 1394 connectors

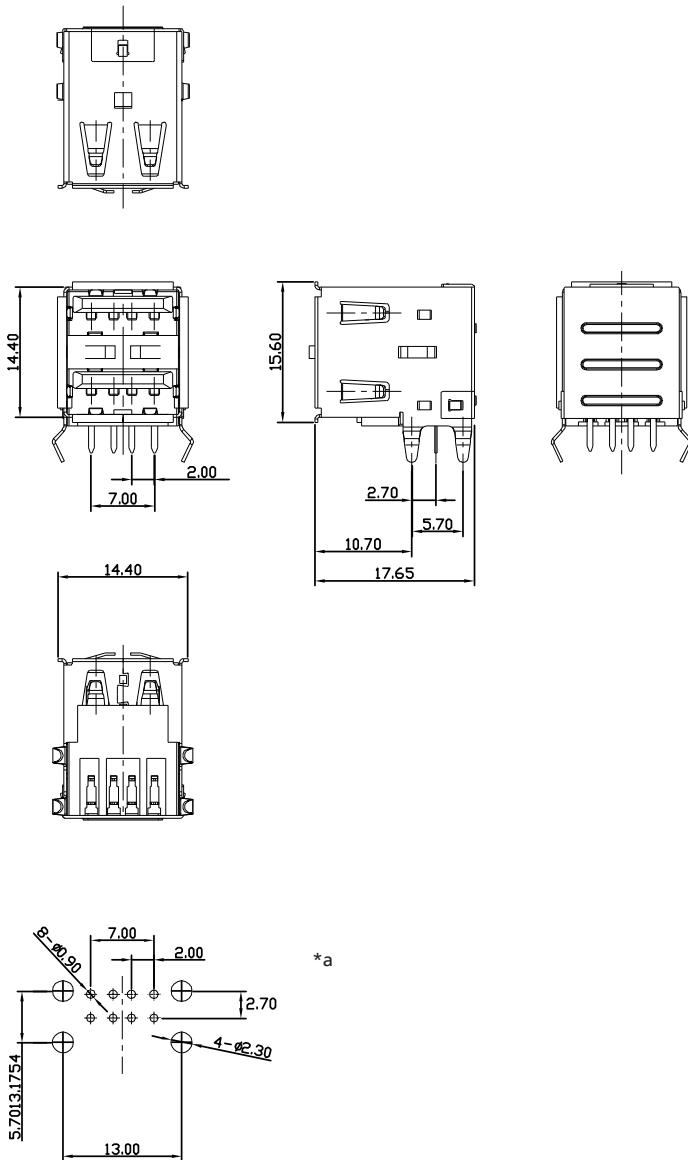


Double USB 2.0 chassis socket type A, angular version, for printed circuit boards, with ground contacts at the front

State: Obsolete

24

2410 10



*a printed circuit board layout

Environmental conditions

Temperature range -25 °C/+85 °C

Materials

Insulating body	PBT GF, V-0 according to UL94
Contact spring	CuSn, gold-plated
Ground contact spring	CuZn
Housing	CuZn

Mechanical data

Mating cycles	1500
Insertion force	≤ 35,7 N
Withdrawal force	≥ 10,2 N

Electrical data (at T_{amb} 20 °C)

Contact resistance	≤ 30 mΩ
Rated current	≤ 1,5 A
Rated voltage	≥ 30 V AC
Rated impulse voltage	750 V/60 s
Insulation resistance	≥ 1 GΩ

Associated products

Counterparts			
☞ 2410 07	☞ 2410 08	☞ 2431	
☞ 2480	☞ 2482		

Accessories
☞ 2412 01

24

2410 10

Designation	Pole Number	PU (Pieces)	MDQ (Pieces)
2410 10	2 x 4	100	600

Packaging:
in a tray