

24

2434 02

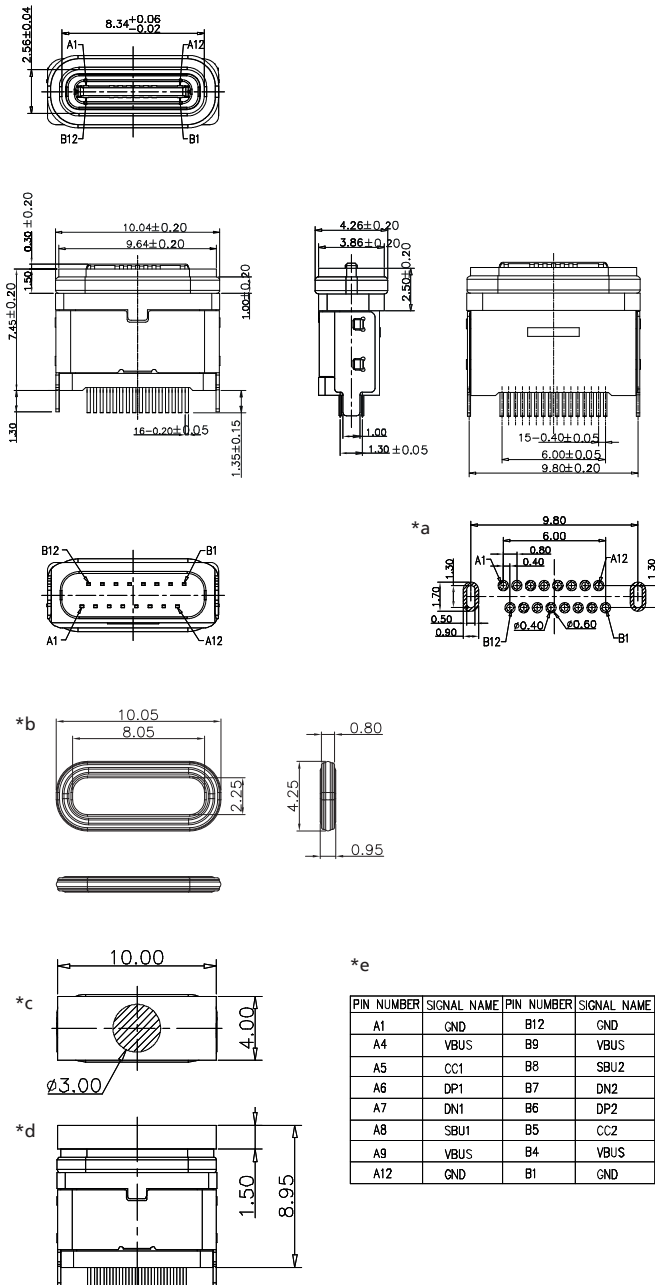
USB and IEEE 1394 connectors



USB 3.1 chassis socket type C, 16 poles, with sealing towards mounting plate, IPx7, upright version, for printed circuit boards, through-hole-reflow technology (THR), with pick-and-place cap

24

2434 02



Environmental conditions

Temperature range -35 °C/+85 °C

Materials

Insulating body LCP, V-0 according to UL94
 Contact spring Cu alloy, tin/nickel/gold-plated
 Schirmung steel, nickel-plated
 Housing steel, nickel-plated
 Cap LCP, V-0 according to UL94
 Seal Silicone, V-0 according to UL94

Mechanical data

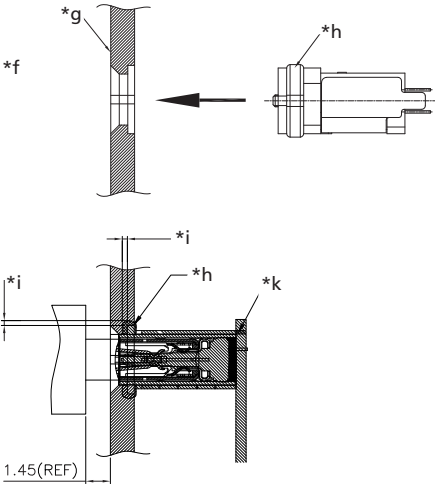
Mating cycles 10000
 Insertion force 5–20 N
 Withdrawal force 6–20 N
 Protection class IPx7

Electrical data (at T_{amb} 20 °C)

Contact resistance 40 mΩ
 Rated current 3 A
 Rated voltage 3 V
 Rated impulse voltage 100 V/60 s
 Insulation resistance \geq 100 MΩ

Associated products

Counterparts
 ☞ 2483 01



- *a printed circuit board layout, components side view
- *b gasket ring
- *c pick-and-place cap, with suction area
- *d component with pick-and-place cap
- *e pin assignment
- *f installation situation and recommendation for sealing
- *g chassis plate
- *h gasket ring
- *i recommended compression of the gasket ring 40–50 %
- *k printed circuit board

24

2434 02

Designation	Pole Number	PU (Pieces)	MDQ (Pieces)
2434 02	16	500	500

Packaging:

on reel