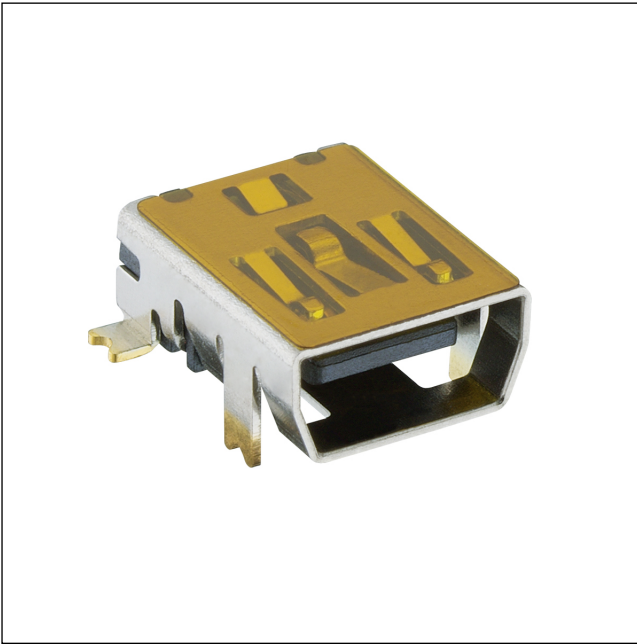


24

2486 02

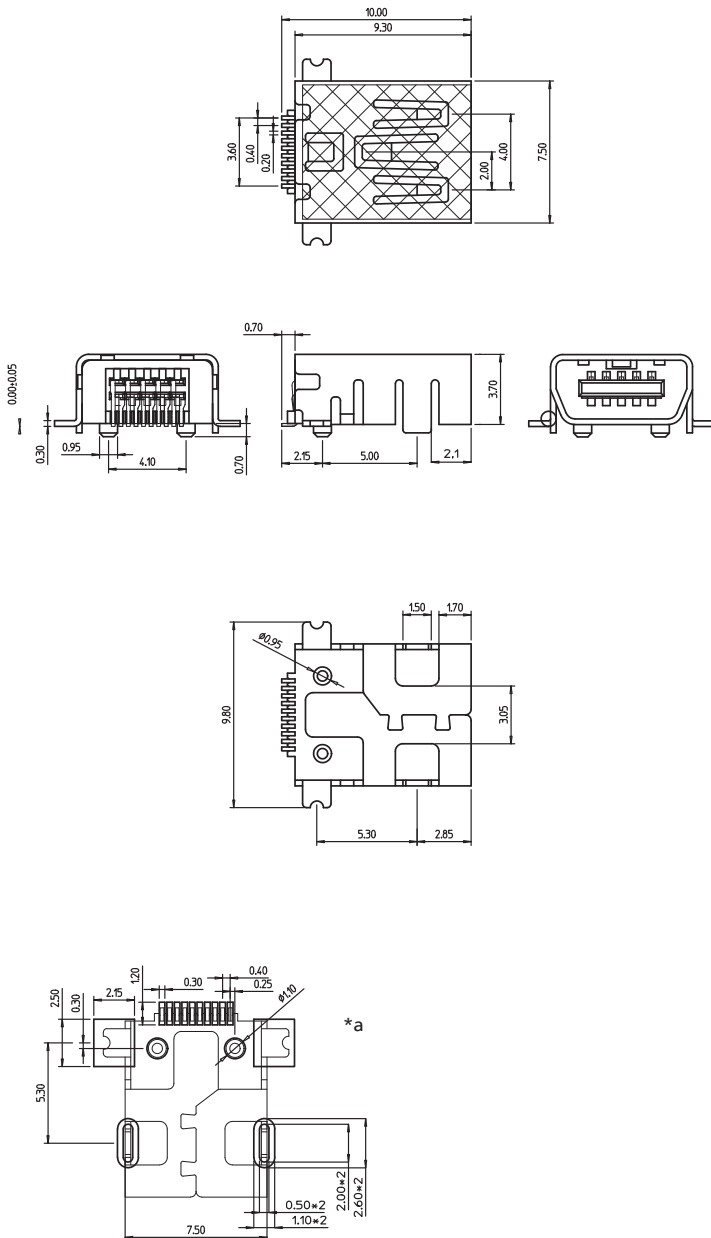
USB and IEEE 1394 connectors



Mini USB 2.0 chassis socket type AB, 10 poles, angular version, for printed circuit boards, surface mounting technology (SMT)

24

2486 02



*a printed circuit board layout, bottom view

Environmental conditions

Temperature range -20 °C/+85 °C

Materials

Insulating body LCP, V-0 according to UL94
 Contact spring CuSn, pre-nickel and gold-plated
 Housing CuZn, nickel-plated, flash gold-plated in solder area
 Adhesive foil for pick and place PE

Mechanical data

Mating cycles 5000
 Insertion force $\leq 7 \text{ N}^1$
 Withdrawal force 36.7–49.1 N
¹ initial value

Electrical data (at $T_{\text{amb}} 20 \text{ °C}$)

Contact resistance $\leq 50 \text{ m}\Omega$
 Rated current 0.5 A
 Rated voltage 250 V
 Rated impulse voltage 100 V/60 s
 Insulation resistance 100 M Ω

Associated products

24

2486 02

Designation	Pole Number	PU (Pieces)	MDQ (Pieces)
2486 02 VP3	10	750	750

Packaging:

on reel