

25

2541 01

## Modular connectors



Double modular chassis socket, 8P8C (RJ45), category 5e, with full shielding, straight, with flange, for snap-in mounting

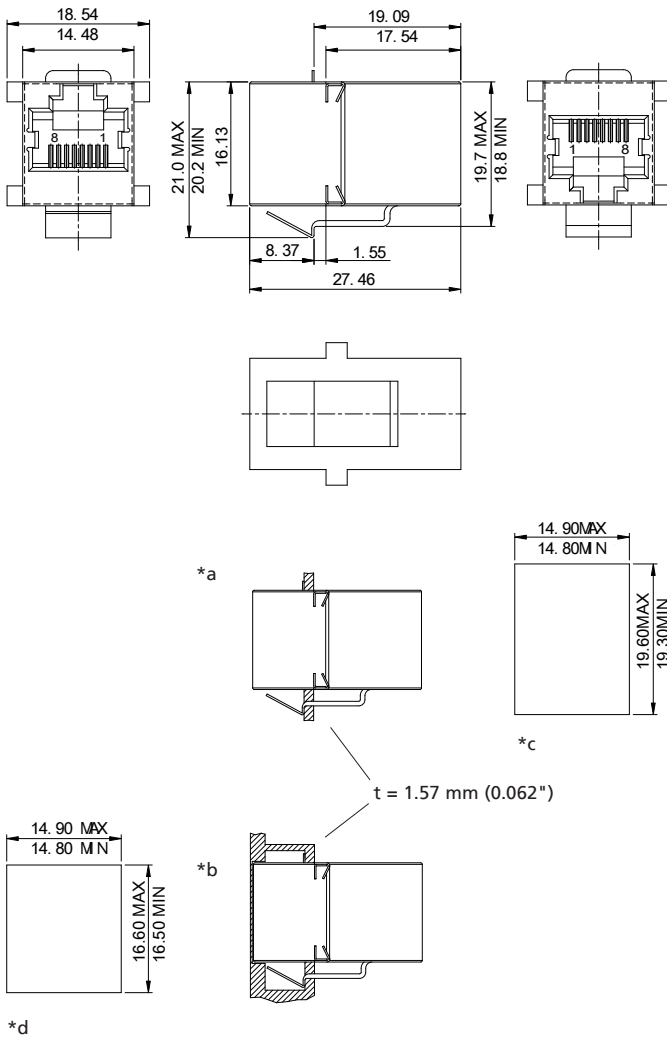
---

State: Active

---

25

2541 01



- \*a panel mounting in single wall plate
- \*b panel mounting in double wall plate
- \*c port for locking latch fixation
- \*d port for front panel only, when using double wall plate

#### Materials

Insulating body	PBT, V-0 according to UL94
Contact spring	CuSn, pre-nickel and selectively gold-plated
Housing	special steel

#### Mechanical data


Mating cycles	1000
---------------	------

#### Electrical data (at $T_{amb}$ 20 °C)

Contact resistance	$\leq 40 \text{ m}\Omega$
Rated current	$\leq 1,5 \text{ A}$
Rated voltage	150 V
Rated impulse voltage	500 V
Insulation resistance	$\geq 500 \text{ M}\Omega$

#### Associated products

Counterparts	
 P 129	 P 129 S

Accessories	
 2533 01	

25

2541 01

Designation	Pole Number	PU (Pieces)	MDQ (Pieces)
2541 01	8	1000	1000

**Packaging:**

in trays, in a cardboard box