

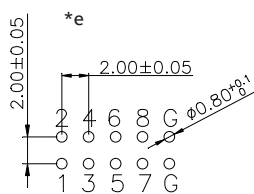
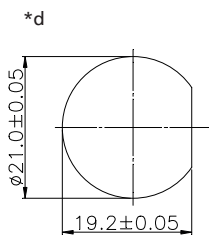
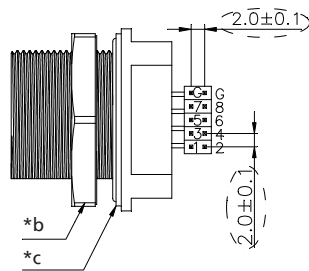
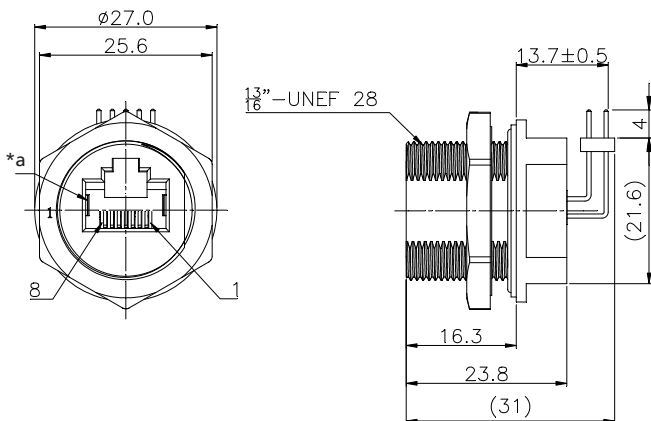
25 2544 01

Modular connectors



Modular chassis socket, 8p8c (RJ45), with ground contact and sealing towards mounting plate, IP68, angular version, for back side mounting, for printed circuit boards

25 2544 01



- *a ground contact/shielding
- *b nut
- *c gasket
- *d port in mounting plate

Environmental conditions

Temperature range -40 °C/+85 °C

Materials

Insulating body	PC/PA, V-0 according to UL94
Contact	CuSn/CuZn, pre-nickel and gold-plated
Ground contact spring	CuSn, tin-plated
Housing	PC, V-0 according to UL94
Hexagonal nut	PC
Potting	Epoxy
Seal	Silicone

Mechanical data

Mating cycles	≥ 1500
Insertion force	≤ 60 N
Withdrawal force	≥ 60 N
Tightening torque nut	1.57–1.77 Nm
Protection class	IP68

Electrical data (at T_{amb} 20 °C)

Contact resistance	≤ 40 mΩ
Rated current	1.5 A
Rated voltage	125 V
Rated impulse voltage	1500 V
Material group	3
Creepage distance	0.56 mm
Clearance	0.56 mm
Insulation resistance	500 MΩ

Associated products

Counterparts			
☞ 2542 01	☞ 2542 02	☞ 2542 03	
☞ P 129	☞ P 129 S		

Accessories
☞ 2533 01

25

2544 01

Designation	Pole Number	PU (Pieces)	MDQ (Pieces)
2544 01	8	30	480

Packaging:

in tablet