

30

302299

Micromodul™ connectors, pitch 1.27 mm



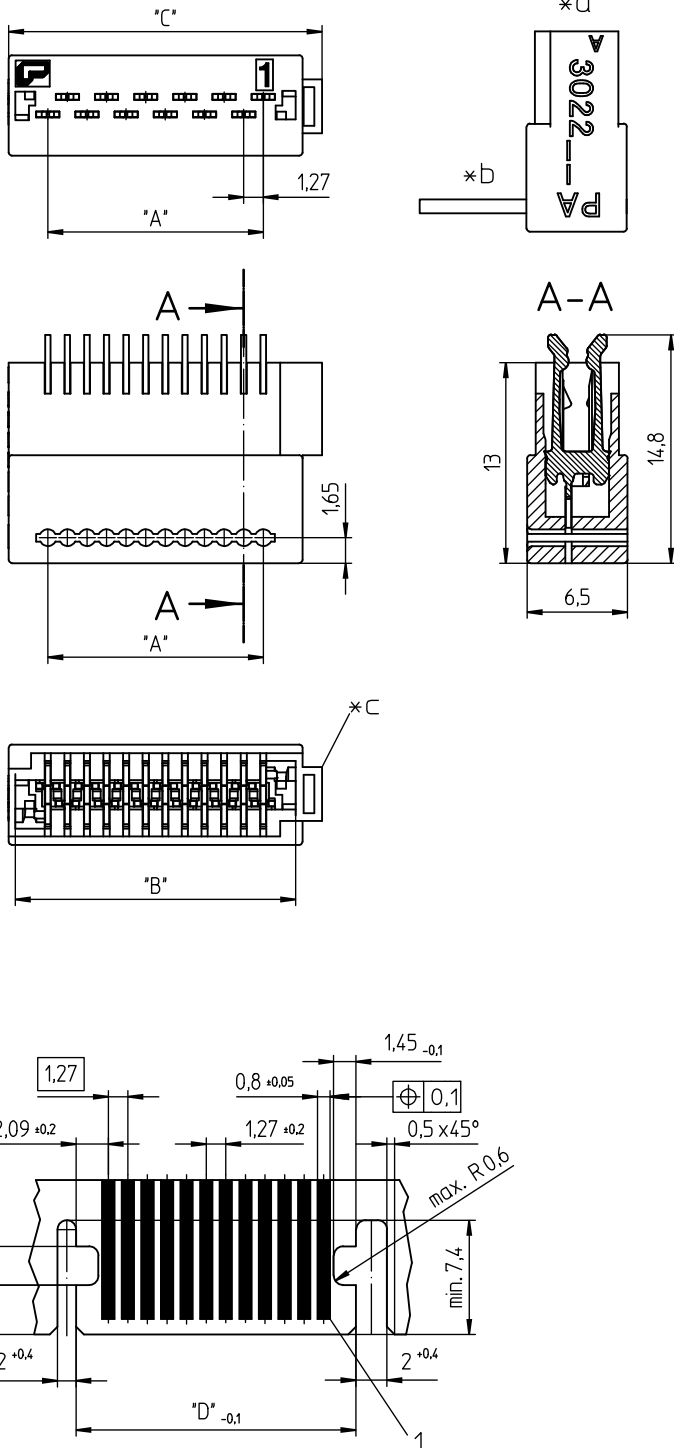
Micromodul™ connector for direct mating, insulation displacement technology (IDT), with locking on printed circuit board by means of locking hooks and toes, with closed sides

Approvals:



30

302299



Environmental conditions

Temperature range -40 °C/+130 °C¹

¹ upper limit temperature (insulating body) RTI (electrical) of the UL Yellow Card

Materials


Insulating body PA GF, V-0 according to UL94¹
Contact spring CuSn, pre-nickel and tin-plated – 302299
CuSn, pre-nickel-plated, gold-plated in contact area, tin-plated in insulation displacement area – 302299 V122

¹ component glow wire resistant (GWT 750 °C), testing acc. to IEC 60695-2-11, assessment acc. to IEC 60335-1 (flame < 2 s)

Mechanical data

Mating with printed circuit board 1.6 ± 0.14 mm
Insertion force/contact < 1.3 N
Withdrawal force/contact > 0.3 N








Connectable conductors for IDT area

Construction flat cable 1.27 mm LiYV
Section min. AWG 28 (0.09 mm²)
Section max. AWG 26 (0.14 mm²)
Insulation diameter 1.0 mm
Approved cables at www.lumberg.com 

Electrical data (at T_{amb} 20 °C)

Contact resistance ≤ 5 mΩ
Rated current 1.2 A at T_{amb} 85 °C
Rated voltage 125 V AC
40 V (VDE)
50 V AC (UL)
Material group I (IEC)/0 (UL) (CTI ≥ 600)
Creepage distance 0.79 mm
Clearance 0.79 mm
Insulation resistance ≥ 1 GΩ

Associated products

Harnessing equipment
 HA3...e  HA3022e-R  HZ-M3022
 KHP3022  PP3022  VARICON 1000
 VARICON 1000-Eco

30

302299

-
- *a terminated connector
 - *b cable departure 90°, bus capable
 - *c protection against mismatching/positioning
 - *d example for printed circuit board layout
-

30

302299

Designation	Pole Number	PU (Pieces)	MDQ (Pieces)	Dimensions			
				A (mm)	B (mm)	C (mm)	D (mm)
302299 04	4	1300	1300	3.81	8.01	10.16	7.99
302299 06	6	1300	1300	6.35	10.55	12.70	10.53
302299 08	8	1300	1300	8.89	13.09	15.24	13.07
302299 10	10	1300	1300	11.43	15.63	17.78	15.61
302299 12	12	1300	1300	13.97	18.17	20.32	18.15
302299 14	14	1300	1300	16.51	20.71	22.86	20.69
302299 16	16	1300	1300	19.05	23.25	25.40	23.23
302299 18	18	1300	1300	21.59	25.79	27.94	25.77
302299 20	20	1300	1300	24.13	28.33	30.48	28.31
302299 22	22	1300	1300	26.67	30.87	33.02	30.85
302299 04 V122	4	1300	1300	3.81	8.01	10.16	7.99
302299 06 V122	6	1300	1300	6.35	10.55	12.70	10.53
302299 08 V122	8	1300	1300	8.89	13.09	15.24	13.07
302299 10 V122	10	1300	1300	11.43	15.63	17.78	15.61
302299 12 V122	12	1300	1300	13.97	18.17	20.32	18.15
302299 14 V122	14	1300	1300	16.51	20.71	22.86	20.69
302299 16 V122	16	1300	1300	19.05	23.25	25.40	23.23
302299 18 V122	18	1300	1300	21.59	25.79	27.94	25.77
302299 20 V122	20	1300	1300	24.13	28.33	30.48	28.31
302299 22 V122	22	1300	1300	26.67	30.87	33.02	30.85

Packaging:
on reel