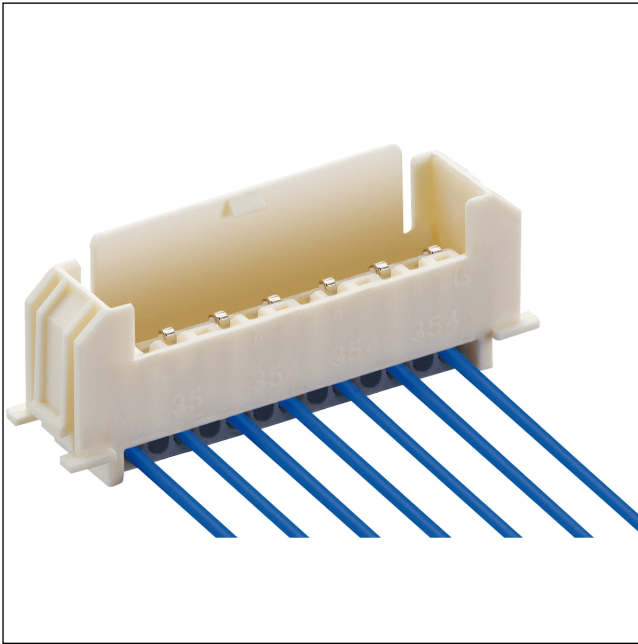


35

3546-1

RAST 2.5 connectors, pitch 2.5/5.0 mm

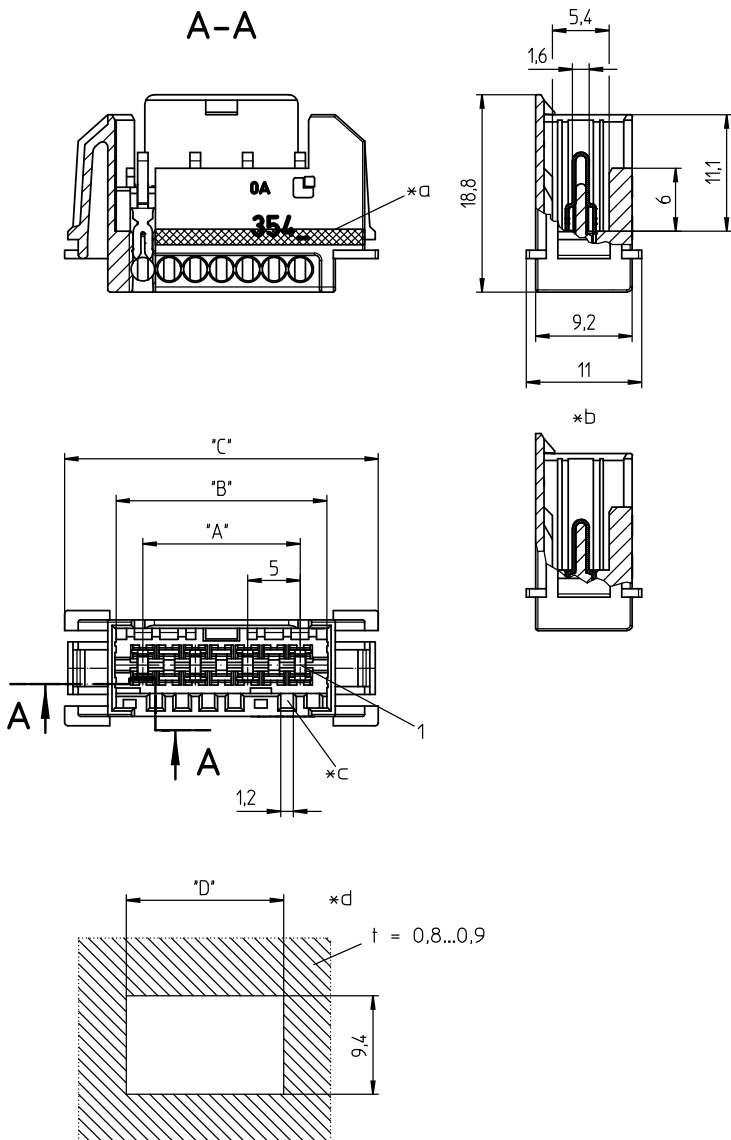


RAST 2.5 chassis pin header, insulation displacement technology (IDT), with locking latch
contact pitch 5.0 mm

Approvals:



35 3546-1



- *a blue color marking on 3546-1 (M...)S01
- *b terminated connector
- *c keying
- *d port in mounting plate

Environmental conditions

Temperature range -40 °C/+120 °C¹

¹ upper limit temperature (insulating body) RTI (electrical) of the UL Yellow Card


Materials

Insulating body PA GF, V-0 according to UL94 – 3546-1 M13S01¹

Contact pin CuSn, tin-plated

¹ component glow wire resistant (GWT 750 °C), testing acc. to IEC 60695-2-11, assessment acc. to IEC 60335-1 (flame < 2 s)

Mechanical data


Keying proposals at www.lumberg.com 

Connectable conductors for IDT area

Construction discrete conductor, notched flat cable 2.5 mm

Section max. 0.50 mm²

Insulation diameter ≤ 2.2 mm

Approved cables at www.lumberg.com 

Electrical data (at T_{amb} 20 °C)

Rated current 4 A (T_{amb} 60 °C, VDE)
2 A (T_{amb} 110 °C, VDE)
6 A (only with 3570..., T_{amb} 85 °C, VDE)
4 A (only with 3570..., T_{amb} 105 °C, VDE)
6 A (only with 3570..., cULus)

Rated voltage 250 V AC¹

Material group IIIa (IEC)/2 (UL) (CTI ≥ 250)¹

Creepage distance 3.8 mm

Clearance 4.0 mm


Insulation resistance > 1 GΩ


¹ according to IEC 60664/DIN EN 60664, CTI UL classification according to ANSI/UL 746A

Associated products


Counterparts

 3523

 3523-2


 352300


 3570

 357000

Harnessing equipment

 HA3...e

 HA354e-ST

 HZ354

 KHP354

 VARICON 7000

 VARICON 7000-DC

-
- [VARICON 7000-DC-CR](#) [VARICON 7000-Eco](#) [VARICON 7000-Eco-CR](#)
 - [VARICON 7000-Inline](#) [VARICON 7000-Inline-CR](#) [VARICON 7000-RD](#)
 - [VARICON 7000-RD-CR](#)
-

35

3546-1

Designation	Pole Number	PU (Pieces)	MDQ (Pieces)	Dimensions			
				A (mm)	B (mm)	C (mm)	D (mm)
3546-1 02	2	500	1000	5	10.1	19.9	17.5
3546-1 03	3	500	1000	10	15.1	24.9	22.5
3546-1 04	4	500	1000	15	20.1	29.9	27.5
3546-1 05	5	500	1000	20	25.1	34.9	32.5
3546-1 06	6	500	1000	25	30.1	39.9	37.5
3546-1 07	7	500	1000	30	35.1	44.9	42.5
3546-1 08	8	500	1000	35	40.1	49.9	47.5
3546-1 09	9	500	1000	40	45.1	54.9	52.5
3546-1 10	10	500	1000	45	50.1	59.9	57.5

Designation to be completed by further details (e.g. for keying, color or material options).

Packaging:

in bulk, in a cardboard box – in bar stock carriers upon request