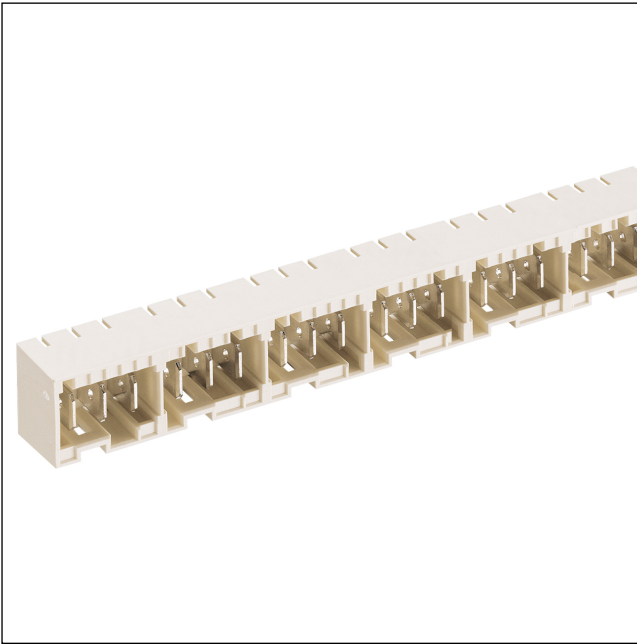


36

3673

RAST 5 connectors, pitch 5.0 mm



RAST 5 tab header, angular, with lower side lock, free to configure with partitions

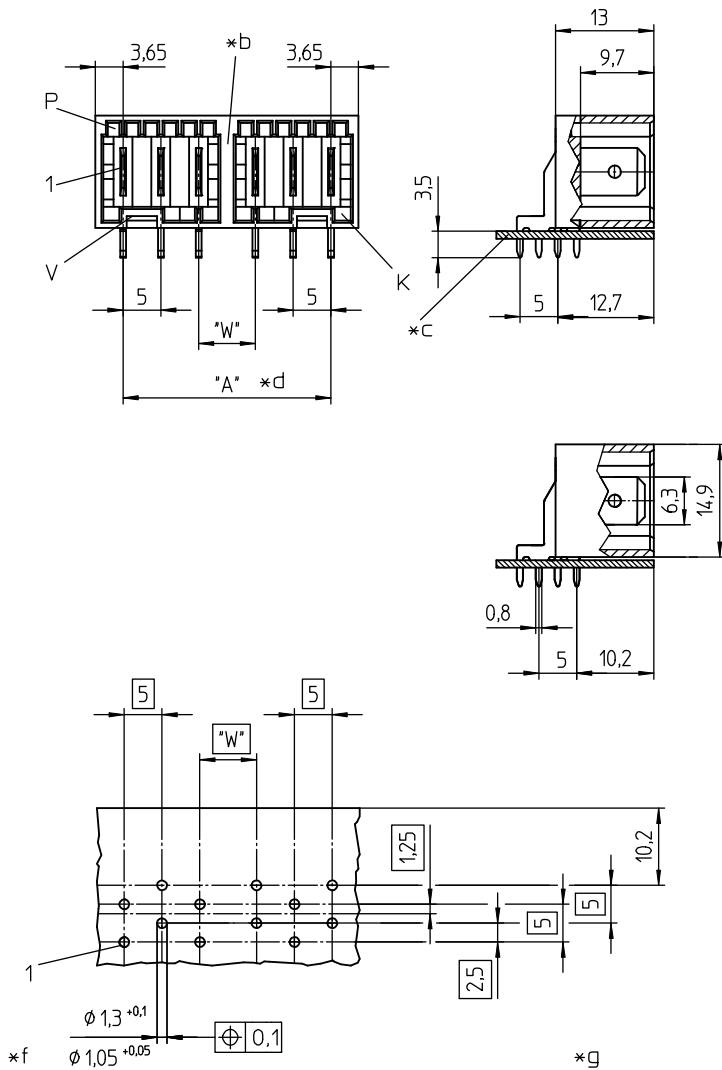
---

Approvals:



36

3673



- \*a K = keying  
P = positioning  
V = space for lock
- \*b partitioning
- \*c printed circuit board
- \*d  $A = (P - 1) \times 5 + (W - 5) \times Y$ , max. 135 mm  
P = poles  
W = 7,5 mm (standard)/10,0 mm  
Y = number of partitions (at least 1 partition every 12 contacts)
- \*f measure for press-fit of solder pins in printed circuit board
- \*g printed circuit board layout, solder side view

#### Environmental conditions

Temperature range -40 °C/+120 °C

#### Materials

Insulating body PA GF, V-0 according to UL94<sup>1</sup>

Contact tab CuZn, pre-nickel and tin-plated

<sup>1</sup> component glow wire resistant (GWT 750 °C), testing acc. to IEC 60695-2-11, assessment acc. to IEC 60335-1 (flame < 2 s)

#### Mechanical data

Contact tab 6,3 x 0,8 mm according to DIN 46244

#### Electrical data (at T<sub>amb</sub> 20 °C)

Rated current 10 A (T<sub>amb</sub> 70 °C)  
 Rated voltage 250 V AC  
 Material group IIIa (IEC)/2 (UL) (CTI ≥ 250)  
 Creepage distance 4,2 mm  
 Clearance 4,2 mm  
 Insulation resistance > 10 GΩ

#### Associated products

Counterparts		
☞ 3611	☞ 3615	☞ 3615-1
☞ 3615-2	☞ 3615-3	☞ 3623
☞ 3623 01 V01	☞ 3626	

Designation	Pole Number	PU (Pieces)	MDQ (Pieces)
3673 03	3		200
3673 04	4		200
3673 05	5		200
3673 06	6		200
3673 07	7		200
3673 08	8		200
3673 09	9		200
3673 10	10		200
3673 11	11		200
3673 12	12		200
3673 13	13		200
3673 14	14		200
3673 15	15		200
3673 16	16		200
3673 17	17		200
3673 18	18		200
3673 19	19		200
3673 20	20		200
3673 21	21		200
3673 22	22		200
3673 23	23		200
3673 24	24		200
3673 25	25		200
3673 26	26		200
3673 27	27		200

Designation to be completed by further details (e.g. for keying, color or material options).

**Packaging:**  
in a cardboard box