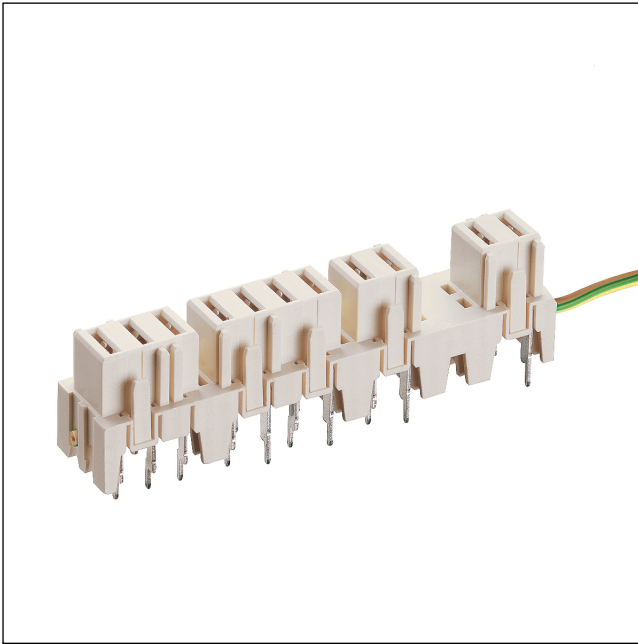


36

3686

RAST 5 connectors, pitch 5.0 mm



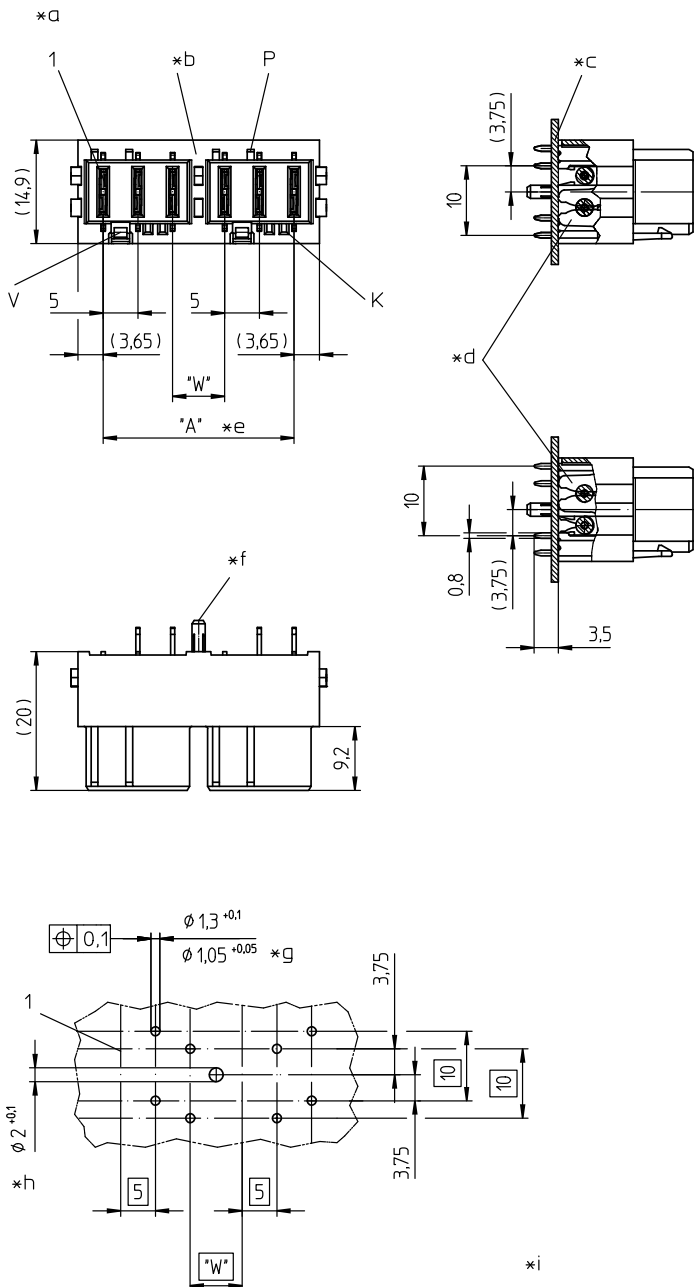
RAST 5 socket board, upright, free to configure with partitions, positioning spigot and neutral and/or protective conductor bridge in insulation displacement technology (IDT)

Approvals:



36

3686



Environmental conditions

Temperature range -40 °C/+120 °C¹

¹ upper limit temperature (insulating body) RTI (electric) according to UL Yellow Card

Materials

Insulating body PA GF, V-0 according to UL94¹
Contact spring CuSn, tin-plated

¹ component glow wire resistant (GWT 750 °C), testing acc. to IEC 60695-2-11, assessment acc. to IEC 60335-1 (flame < 2 s)

Mechanical data

Bridge conductor stranded wire LiY 0.75 mm²
Insertion force/contact ≤ 4,0 N
Withdrawal force/contact ≥ 1,0 N

Electrical data (at T_{amb} 20 °C)

Contact resistance ≤ 5 mΩ
Rated current 10 A (T_{amb} 70 °C, VDE/ULus)
7 A (T_{amb} 70 °C, cUL)
Rated voltage 250 V AC (VDE/cULus)
Material group IIIa (IEC)/2 (UL) (CTI ≥ 250)
Creepage distance 4,2 mm
Clearance 4,2 mm
Insulation resistance > 10 GΩ

Associated products

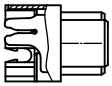
Counterparts

☞ 3618	☞ 3618-1	☞ 3618-2
☞ 3618-3	☞ 361899	☞ 361899-1
☞ 361899-2	☞ 361899-3	☞ 3647

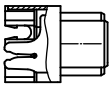
36

3686

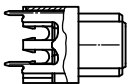
types of contacts



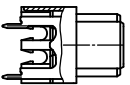
a



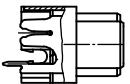
b



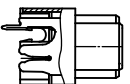
c



d



e



f

- *a K = keying
P = positioning
V = lock
- *b partition, space for frames of counterparts
- *c printed circuit board
- *d insulation displacement contacts with neutral/protective conductor bridges
- *e $A = (P - 1) \times 5 + (W - 5) \times Y$, max. 135 mm with one-piece insulating body
P = poles
W = 7.5 mm/12.5 mm/15.0 mm
Y = number of partitions (at least 1 partition every 12 contacts)
- *f positioning spigot (optional)
- *g bore hole diameter 1.05 mm for press-fit of solder pins in printed circuit board
- *h bore hole diameter 2.0 mm for press-fit of positioning spigot in printed circuit board
- *i example for printed circuit board layout, solder side view

Designation	Pole Number	PU (Pieces)	MDQ (Pieces)
3686 02	2		200
3686 03	3		200
3686 04	4		200
3686 05	5		200
3686 06	6		200
3686 07	7		200
3686 08	8		200
3686 09	9		200
3686 10	10		200
3686 11	11		200
3686 12	12		200
3686 13	13		200
3686 14	14		200
3686 15	15		200
3686 16	16		200
3686 17	17		200
3686 18	18		200
3686 19	19		200
3686 20	20		200
3686 21	21		200
3686 22	22		200
3686 23	23		200
3686 24	24		200
3686 25	25		200
3686 26	26		200

Designation to be completed by further details (e.g. for keying, color or material options).

Packaging:

in a cardboard box