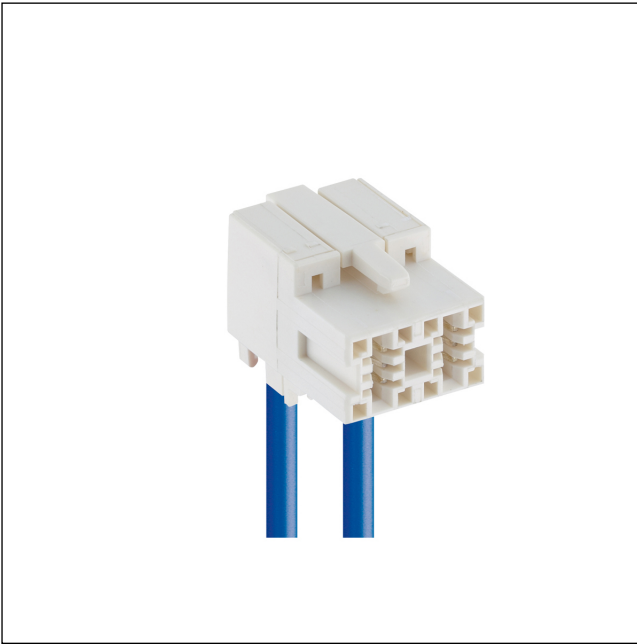


36

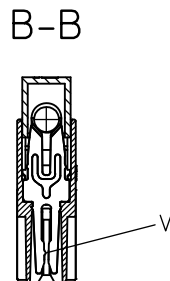
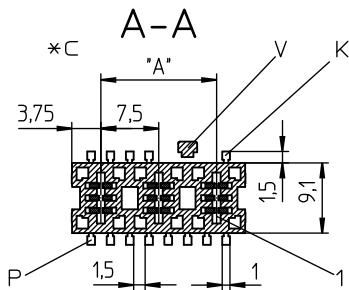
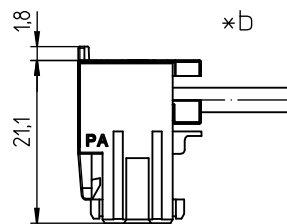
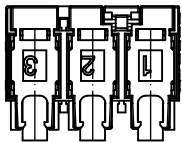
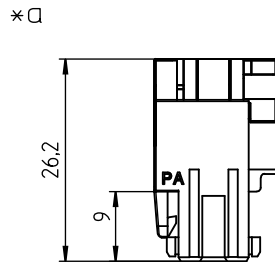
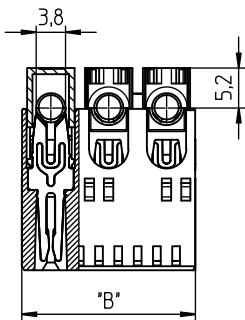
3690

RAST 7.5 Power™ connectors, pitch 7.5 mm

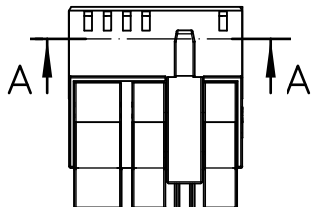
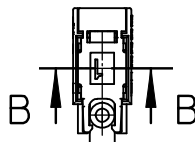


RAST 7.5 Power™ connector for indirect mating, insulation displacement technology (IDT), with exterior locking, consecutive placement without loss of pitch

36 3690



*d



Environmental conditions

Temperature range -40 °C/+130 °C¹

¹ upper limit temperature (insulating body) RTI (electrical) of the UL Yellow Card

Materials

Insulating body PA, V-2 according to UL94¹

Contact spring CuNiSi, silver-plated

¹ component glow wire resistant (GWT 750 °C), testing acc. to IEC 60695-2-11, assessment acc. to IEC 60335-1 (flame < 2 s)

Mechanical data

Mating with tab contact 6.3 mm x 0.8 mm according to DIN 46244

Insertion force ≤ 95 N¹

Withdrawal force ≥ 45 N¹

Keying proposals at www.lumberg.com 

¹ measured at a mating pair of connectors 3690 02/3695 02

Connectable conductors for IDT area

Construction discrete conductor

Section max. AWG 14 (2,5 mm²)

Insulation diameter 3,6 mm

Approved cables at www.lumberg.com 

Electrical data (at T_{amb} 20 °C)

Contact resistance ≤ 5 mΩ

Rated current 25 A (T_{sub>U} 85 °C)</sub>

Rated voltage 500 V AC

Material group IIIa (IEC)/2 (UL) (CTI ≥ 250)

Creepage distance 5,7 mm

Clearance 5,7 mm

Insulation resistance > 10 GΩ

Associated products

Counterparts

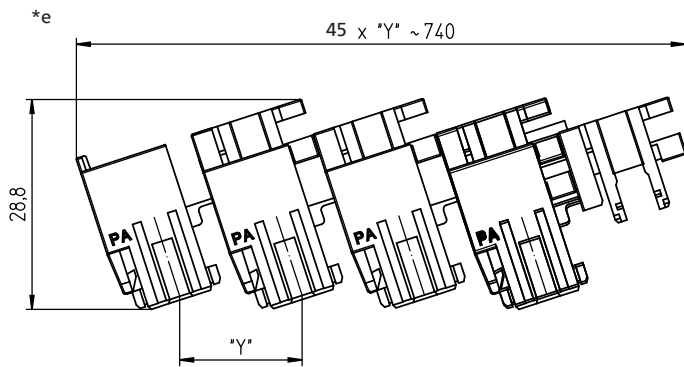
 3695

Harnessing equipment

 KHP369

36

3690



- *a terminated connector
- *b cable departure 90° or 180°
- *c K = keying
P = positioning
V = lock
- *d locking of single pole version
- *e chaining of the component parts (state of delivery)

36

3690

Designation	Pole Number	PU (Pieces)	MDQ (Pieces)	Dimensions	
				A (mm)	B (mm)
3690 01	1	3960	4050		7.5
3690 02	2	1980	2025	7.5	15.0

Designation to be completed by further details (e.g. for keying, color or material options).

Packaging:

chained, in a cardboard box