

37 3723

RAST 7.5 Power™ connectors, pitch 7.5 mm



RAST 7.5 Power™ connector for indirect mating, insulation displacement technology (IDT), with exterior locking, consecutive placement without loss of pitch

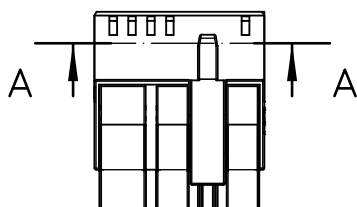
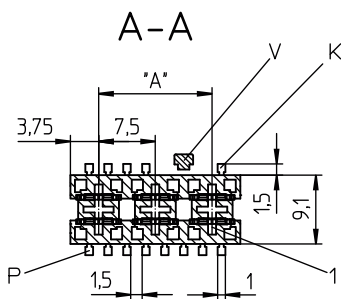
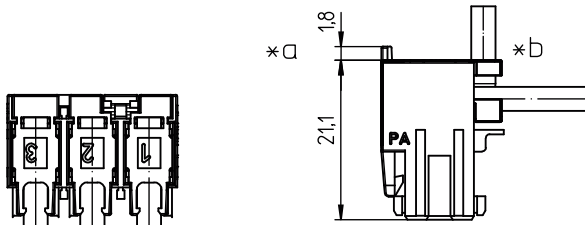
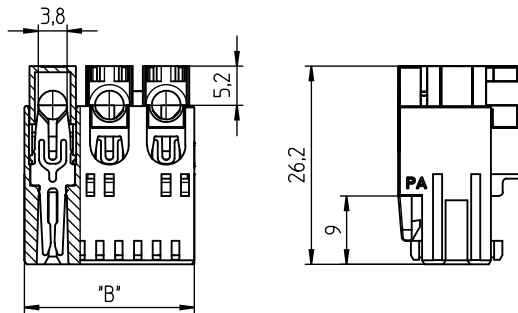
---

Approvals:  pending  pending

---

37

3723



## Environmental conditions

Temperature range -40 °C/+130 °C<sup>1</sup>

<sup>1</sup> upper limit temperature (insulating body) RTI (electrical) of the UL Yellow Card

## Materials

Insulating body PA, V-0 according to UL94 – 3723 M30<sup>1</sup>

Contact spring CuNiSi, silver-plated

<sup>1</sup> M30: material halogen-free, GWFI 960 °C (0.4 mm), GWIT 960 °C (0.4 mm)

## Mechanical data

Mating with tab contact 6.3 mm x 0.8 mm according to DIN EN 61210/ DIN 46244

Insertion force ≤ 25 N<sup>1</sup>

Withdrawal force ≥ 20 N<sup>1</sup>

Keying proposals at [www.lumberg.com](http://www.lumberg.com) 

<sup>1</sup> measured at a mating pair of connectors 3723 02/3741 02

## Connectable conductors for IDT area

Construction discrete conductor

Section max. AWG 14 (2.5 mm<sup>2</sup>)

Insulation diameter ≤ 3.6 mm

Approved cables at [www.lumberg.com](http://www.lumberg.com) 

## Electrical data (at T<sub>amb</sub> 20 °C)

Contact resistance ≤ 5 mΩ

Rated current 25 A (T<sub>amb</sub> 70 °C)

Rated voltage 500 V AC

Material group I (IEC)/0 (UL) (CTI ≥ 600)

Creepage distance 5.7 mm

Clearance 5.7 mm

Insulation resistance > 10 GΩ

## Associated products


Counterparts

 3741

Harnessing equipment

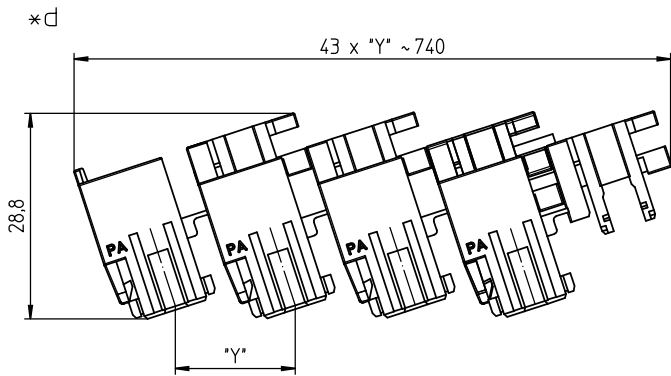
 HA3...e

 HA37e

 HA37e-CA

 KHP37

37 3723



- \*a terminated connector
- \*b cable departure 90° or 180°
- \*c K = keying  
P = positioning  
V = lock
- \*d chaining of the component parts (state of delivery)

37

3723

Designation	Pole Number	PU (Pieces)	MDQ (Pieces)	Dimensions	
				A (mm)	B (mm)
3723 02	2	2025	2025	7.5	15.0
3723 03	3	1215	1215	15.0	22.5
3723 04	4	810	810	22.5	30.0
3723 05	5			30.0	37.5

Designation to be completed by further details (e.g. for keying, color or material options).

**Packaging:**

chained, in a cardboard box