

38

3823

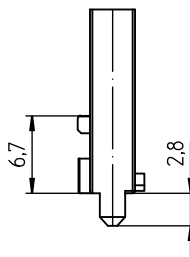
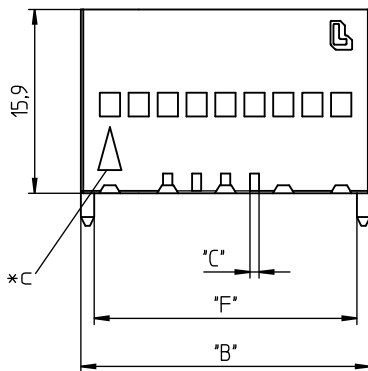
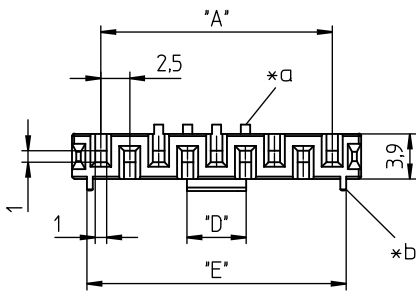
Multimodul™ connectors, pitch 2.5 mm



Empty Multimodul™ housing for reception of crimp contacts, for indirect mating

38

3823



- \*a keying nose; 2 and 3 pole versions with additional options
- \*b guide rib
- \*c mark for contact 1

### Environmental conditions

Temperature range -40 °C/+120 °C<sup>1</sup>

<sup>1</sup> upper limit temperature (insulating body) RTI (electrical) of the UL Yellow Card

### Materials

Insulating body PA GF, V-0 according to UL94 – 3823 ... 30<sup>1</sup>

<sup>1</sup> component glow wire resistant (GWT 750 °C), testing acc. to IEC 60695-2-11, assessment acc. to IEC 60335-1 (fflame < 2 s)

### Mechanical data

Further data see suitable crimp contact proposed keyings on request

### Electrical data (at T<sub>amb</sub> 20 °C)

Rated current 5.0 A (T<sub>amb</sub> 30 °C)  
2.5 A (T<sub>amb</sub> 70 °C)  
Rated voltage 200 V AC (every chamber equipped)  
325 V AC (every other chamber equipped)

Material group IIIa (CTI ≥ 250)<sup>1</sup>

Creepage distance 2,15 mm

Clearance 1,90 mm

Insulation resistance > 1 GΩ

Further data see suitable crimp contact

<sup>1</sup> see suitable crimp contact

### Associated products

#### Counterparts

☞ 3850 ☞ 3851 ☞ 3852  
☞ 3853 ☞ 8385 A 01

#### Accessories

☞ 3111 01 G ☞ 3111 01 L ☞ 3111 03 G  
☞ 3111 03 L

Designation	Pole Number	PU (Pieces)	MDQ (Pieces)	Dimensions					
				A (mm)	B (mm)	C (mm)	D (mm)	E (mm)	F (mm)
3823 02 VP15	2	2500	2500	2.5	7.5	1.3/0.8*a	1.2	5.2	5.2
3823 03 VP15	3	2500	2500	5.0	10.0	1.3/0.8*a	3.2	7.7	7.7
3823 04 VP15	4	2500	2500	7.5	12.5	0.8	5.1	10.2	10.2
3823 05 VP15	5	2500	2500	10.0	15.0	0.8	5.1	12.4	12.7
3823 06 VP15	6	2500	2500	12.5	17.5	0.8	5.1	14.9	15.2
3823 07 VP15	7	2500	2500	15.0	20.0	0.8	5.1	17.4	17.7
3823 08 VP15	8	2500	2500	17.5	22.5	0.8	5.1	19.9	20.2
3823 09 VP15	9	2500	2500	20.0	25.0	0.8	5.1	22.4	22.7
3823 10 VP15	10	2500	2500	22.5	27.5	0.8	5.1	24.9	25.2
3823 11 VP15	11	1000	2000	25.0	30.0	0.8	5.1	27.4	27.7
3823 12 VP15	12	1000	2000	27.5	32.5	0.8	5.1	29.9	30.2
3823 13 VP15	13	1000	2000	30.0	35.0	0.8	5.1	32.4	32.7
3823 14 VP15	14	1000	2000	32.5	37.5	0.8	5.1	34.9	35.2
3823 15 VP15	15	1000	2000	35.0	40.0	0.8	5.1	37.4	37.7
3823 16 VP15	16	1000	2000	37.5	42.5	0.8	5.1	39.9	40.2
3823 17 VP15	17	1000	2000	40.0	45.0	0.8	5.1	42.4	42.7
3823 18 VP15	18	1000	2000	42.5	47.5	0.8	5.1	44.9	45.2
3823 19 VP15	19	1000	2000	45.0	50.0	0.8	5.1	47.4	47.7
3823 20 VP15	20	1000	2000	47.5	52.5	0.8	5.1	49.9	50.2

Designation to be completed by further details (e.g. for keying, color or material options).

**Packaging:**

in bulk, in a cardboard box (VP15)