

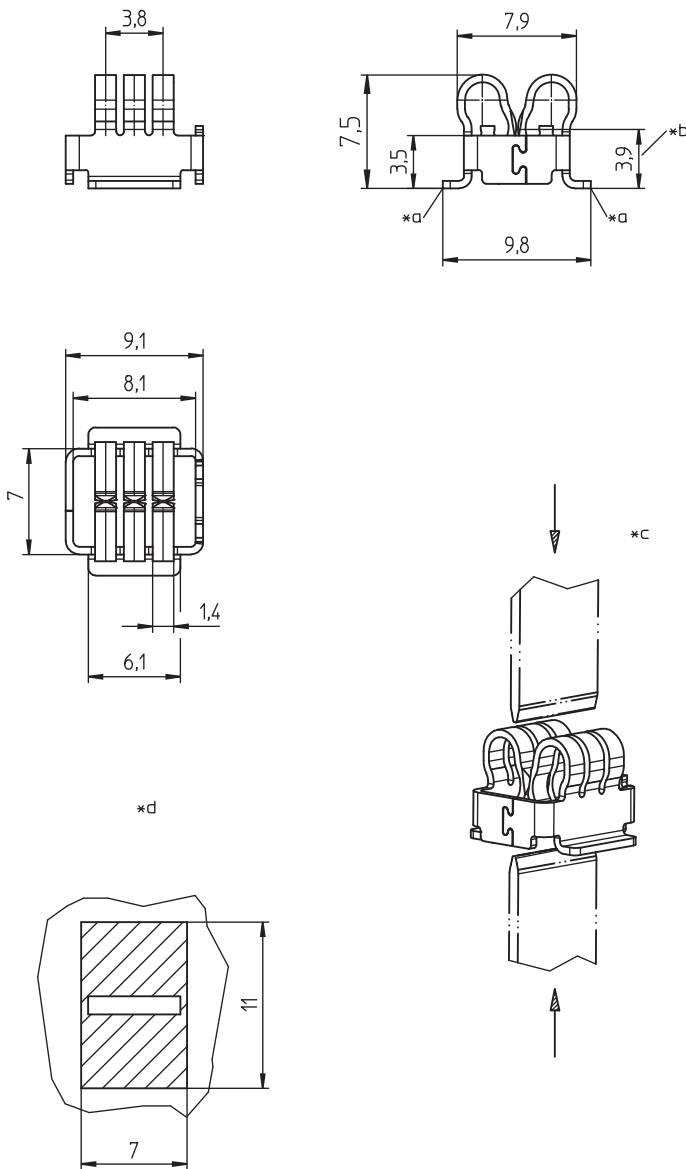
45 4580 03 OP T2,0

High-current contact elements



High-current contact bush, mateable from top or bottom direction, for tab contacts 2.0 mm, for printed circuit boards or lead frames

45 4580 03 OP T2,0



**Environmental conditions**

Temperature range -40 °C/+120 °C

**Materials**

Contact CuCr alloy, tin-plated

**Mechanical data**

Mating with tab contact 5.3 mm x 2.0 mm  
applicable for reflow soldering on  
printed circuit board  
applicable for laser welding on  
lead frame, e.g. Cu, tin-plated

Insertion force 35 ± 10 N – top entry  
50 ± 10 N – bottom entry

Withdrawal force 6 +10/-3 N

**Electrical data (at T<sub>amb</sub> 20 °C)**

Contact resistance < 0.5 mΩ  
Rated current ≤ 60 A<sup>1</sup>

<sup>1</sup> depending on connection to the printed circuit board/to the lead frame

- \*a supporting surface for soldering
- \*b height contact point
- \*c mateable from top or bottom direction
- \*e soldering area/circuit board installation space

45

4580 03 OP T2,0

Designation	Pole Number	PU (Pieces)	MDQ (Pieces)
4580 03 OP T2,0 V12VP12	1	2100	2100

**Packaging:**

on reel