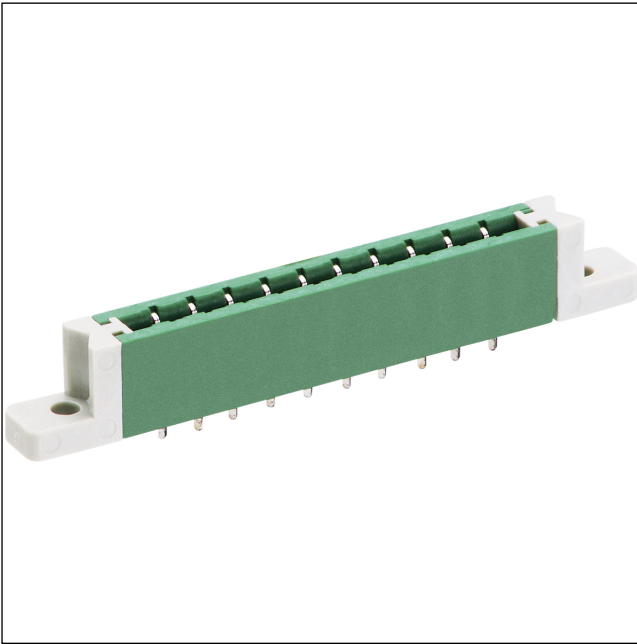


51

5 RF

Direct connectors for insert cards, pitch 2.5/2.54/5.0/ 5.08 mm

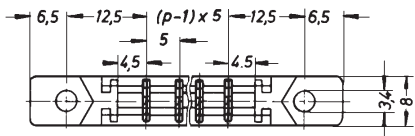
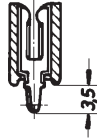
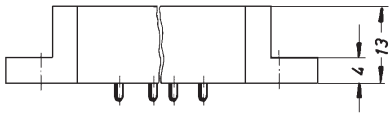


Socket board for direct mating, with mounted pair of flanges F, with solder pins

State: Phasing out

51

5 RF



Environmental conditions

Temperature range -25 °C/+100 °C

Materials

Insulating body PPO
Contact spring CuSn, pre-nickel and tin-plated
Flange PC

Mechanical data

Mating with printed circuit board 1.5 ± 0.14 mm

Electrical data (at T_{amb} 20 °C)

Contact resistance ≤ 3 mΩ
Rated current 5 A
Rated voltage 250 V AC
Rated impulse voltage ≥ 3,0 kV

Associated products

Accessories
☞ FF

Designation	Pole Number	PU (Pieces)	MDQ (Pieces)
5 RF 03	3	200	5000
5 RF 04	4	200	5000
5 RF 05	5	200	5000
5 RF 06	6	200	5000
5 RF 07	7	200	5000
5 RF 08	8	200	5000
5 RF 09	9	200	5000
5 RF 10	10	200	5000
5 RF 11	11	200	5000
5 RF 12	12	200	5000
5 RF 13	13	200	5000
5 RF 14	14	200	5000
5 RF 15	15	200	5000
5 RF 16	16	200	5000
5 RF 17	17	200	5000
5 RF 18	18	200	5000
5 RF 19	19	200	5000
5 RF 20	20	200	5000
5 RF 21	21	200	5000
5 RF 22	22	200	5000
5 RF 23	23	200	5000
5 RF 24	24	200	5000
5 RF 25	25	200	5000
5 RF 26	26	200	5000
5 RF 27	27	200	5000
5 RF 28	28	200	5000
5 RF 29	29	200	5000
5 RF 30	30	200	5000
5 RF 31	31	200	5000

Packaging:

in bulk, in a cardboard box