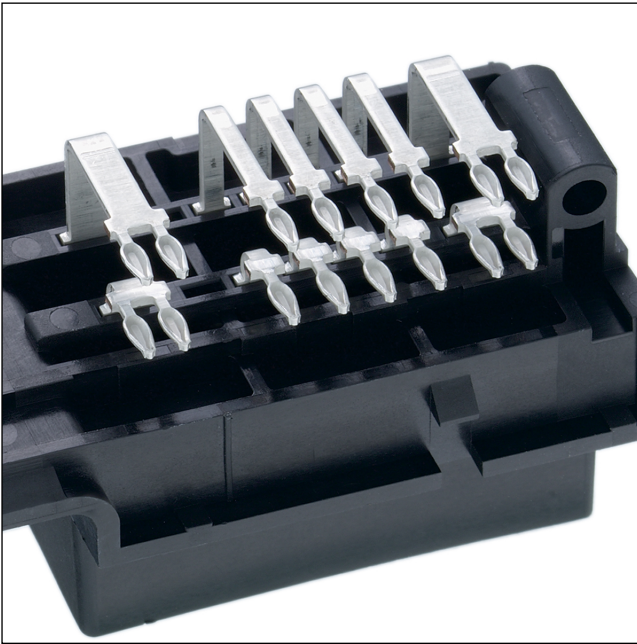


72

7201

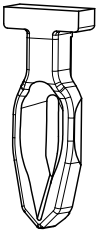
Press-fit interconnect solutions



Press-fit contact 0.8 for customer-specific interconnect solutions, according to internal test specifications as per automotive requirements on the basis of IEC 60352-5

72

7201



Materials

Contact	CuSn, pre-nickel and matt tin-plated
---------	--------------------------------------

Characteristics of press-fit zone

Material thickness	0,8 mm
Lengths press-fit zone	4,7 mm

Characteristics of printed circuit board

Material	FR4, min. TG (DSC) = 150 °C, chemical tin ¹
Thickness	1,6 mm ± 10 %
Style	multilayer ²
Diameter borehole	1.6 mm ± 0.025 mm (before copper-plating) 1.49 mm ± 0.05 (after copper-plating and finishing)
Copper coating thickness of borehole	30–50 µm

¹ according to IPC-4101B/121

² according to IPC-A600H class 3, IPC-6011 class 3, IPC-6021D class 3, IPC-TM-650 and Perfaq 2F/3D

Mechanical characteristics

70 N ± 20 N
70 N ± 20 N

72

7201

Designation	Pole Number	PU (Pieces)	MDQ (Pieces)
7201	-		