

15 KLBR 4

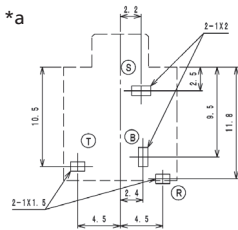
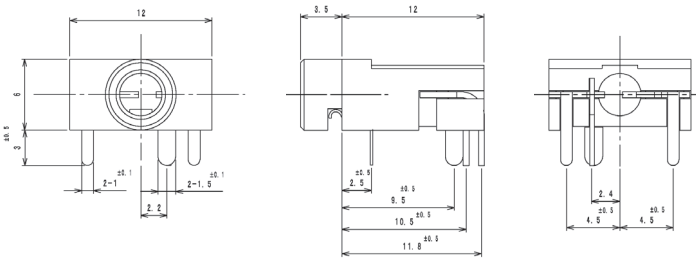
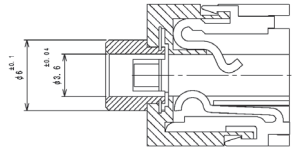
Jack connectors



Jack chassis socket, 3.5 mm acc. to JIS C 6560 JC35J3Z, 3 poles/stereo, angular version, with break contact, for printed circuit boards

15

KLBR 4



*a printed circuit board layout, solder side view

Environmental conditions

Temperature range -10 °C/+50 °C

Materials

Insulating body PBT, V-0 according to UL94
 Contact bush CuZn, nickel-plated
 Contact Cu alloy, nickel-plated/silver-plated

Mechanical data

Mating cycles 3000
 Insertion force 4–30 N¹
 Withdrawal force 4–30 N¹

¹ measured with a gauge plug

Electrical data (at T_{amb} 20 °C)

Contact resistance ≤ 50 mΩ
 Rated current 1 A
 Rated voltage 34 V AC/DC
 Rated impulse voltage 500 V/60 s
 Insulation resistance ≥ 100 MΩ

Associated products

Counterparts
 ☞ 1532 07 ☞ KLS 40 ☞ KLS 44
 ☞ WKLS 40

15

KLBR 4

Designation	Pole Number	PU (Pieces)	MDQ (Pieces)
KLBR 4	3	500	500

Packaging:

in bulk, in a cardboard box or a plastic bag