

15 KLKM 3

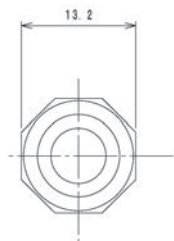
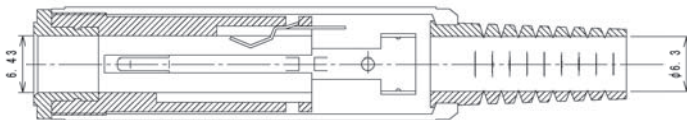
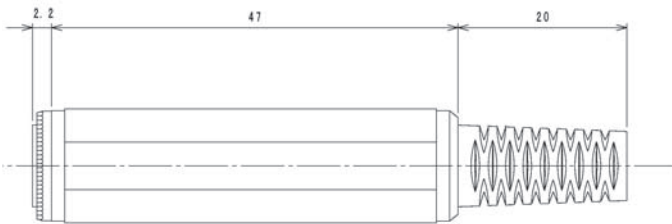
Jack connectors



Jack socket acc. to JIS C 6560 JC63J2A, 6.35 mm, 2 poles/  
mono, straight version, with bend protection and solder  
terminals

15

KLKM 3



#### Environmental conditions

Temperature range -20 °C/+70 °C

#### Materials

Insulating body PPO  
Contact CuSn/CuZn/steel, nickel-plated  
Housing PE

#### Mechanical data

Mating cycles  $\geq 5000$   
Insertion force 5–40 N  
Withdrawal force 5–40 N

#### Connectable conductors for solder area

Cable diameter 6,3 mm

#### Electrical data (at $T_{amb}$ 20 °C)

Contact resistance  $\leq 30 \text{ m}\Omega$   
Rated current 2 A  
Rated voltage 34 V AC/DC  
Rated impulse voltage 250 V/60 s  
Insulation resistance  $\geq 50 \text{ M}\Omega$

#### Associated products

Counterparts  
☞ KLKM 3

15

KLKM 3

Designation	Pole Number	PU (Pieces)	MDQ (Pieces)
KLKM 3	2	50	500

**Packaging:**

in bulk, in a cardboard box or a plastic bag