

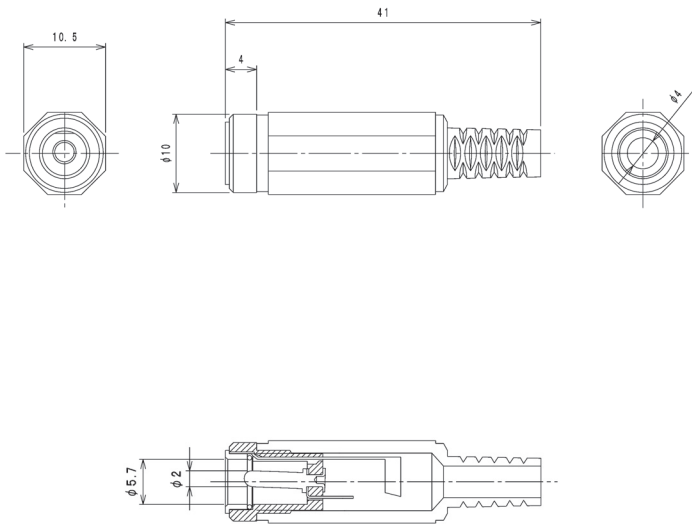
16

NEK/J 210

Power supply connectors



Power supply cable socket, straight version, with solder eyes and bend protection



#### Environmental conditions

Temperature range -20 °C/+70 °C

#### Materials

|                 |                           |
|-----------------|---------------------------|
| Insulating body | PA, V-2 according to UL94 |
| Contact         | CuZn, nickel-plated       |
| Housing         | PE                        |

#### Mechanical data

|                     |                        |
|---------------------|------------------------|
| Diameter opening    | 5.7 mm                 |
| Diameter center pin | 2.0 mm                 |
| Mating cycles       | ≥ 5000 <sup>1</sup>    |
| Insertion force     | 4–20 N (initial value) |
| Withdrawal force    | 2–15 N (initial value) |

<sup>1</sup> measured with a gauge plug







#### Connectable conductors for solder area

Cable diameter 4 mm

#### Electrical data (at T<sub>amb</sub> 20 °C)

|                       |            |
|-----------------------|------------|
| Contact resistance    | ≤ 30 mΩ    |
| Rated current         | 2 A        |
| Rated voltage         | 24 V DC    |
| Rated impulse voltage | 500 V/60 s |
| Insulation resistance | ≥ 100 MΩ   |

#### Associated products

|  |   |  |  |
|--|---|--|--|
| Counterparts   |   |  |  |
|  1633 02    |  1633 03   |  NES/J 21   |  |
|  NES/J 21 W |  NES/J 210 |  XNES/J 210 |  |

16

NEK/J 210

| Designation | Pole Number | PU (Pieces) | MDQ (Pieces) |
|-------------|-------------|-------------|--------------|
| NEK/J 210   | 2           | 100         | 500          |

**Packaging:**

in bulk, in a cardboard box or a plastic bag