

16

NES 1

## Power supply connectors

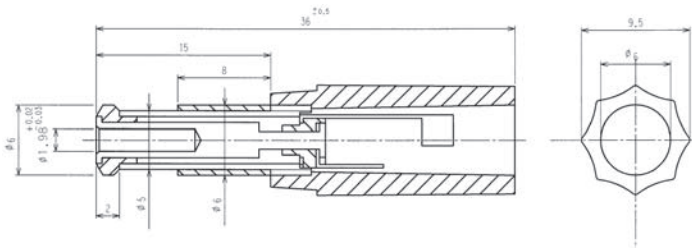


Power supply plug,  
6.0 mm x 1.98 mm, acc. to DIN 45323, straight version, with  
solder eyes

---

State: Obsolete

---



**Environmental conditions**

Temperature range -20 °C/+70 °C

**Materials**

Insulating body PC  
 Contact CuZn, nickel-plated  
 Insulation ABS/ebonite  
 Housing ABS

**Mechanical data**

Outer diameter 6.0 A  
 Inner diameter 1.98 mm

**Connectable conductors for solder area**

Cable diameter 6 mm

**Electrical data (at T<sub>amb</sub> 20 °C)**

Rated current 0.5 A  
 Rated voltage 34 V DC  
 Rated impulse voltage 500 V/60 s  
 Insulation resistance ≥ 100 MΩ

**Associated products**

Counterparts  
 ↗ NEB 1 ↗ NEB 1 R

16

NES 1

Designation	Pole Number	PU (Pieces)	MDQ (Pieces)
NES 1	2	100	500

**Packaging:**

in bulk, in a cardboard box or a plastic bag