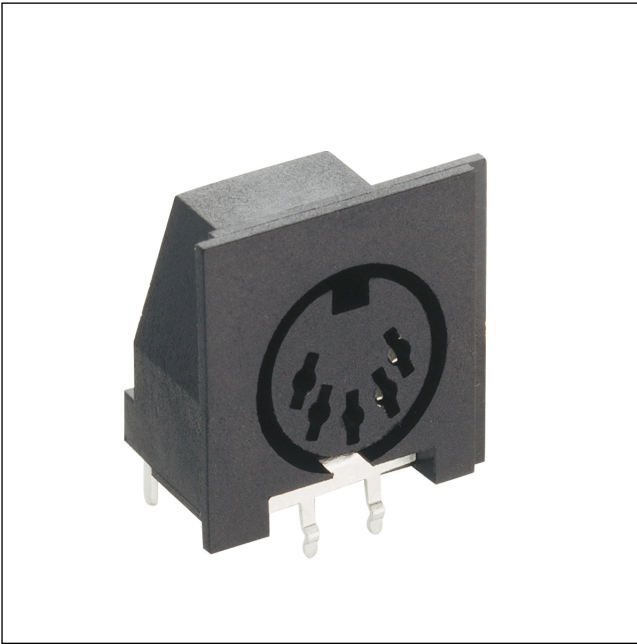


01 WB

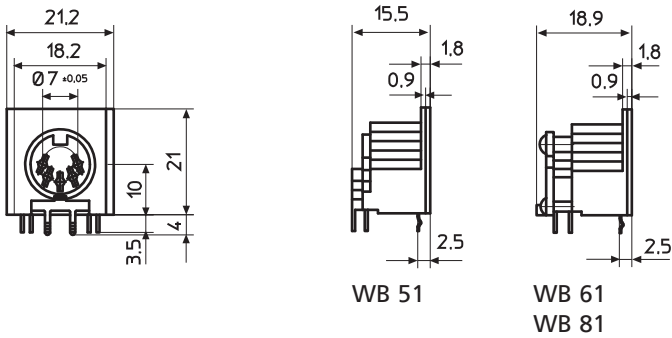
DIN circular connectors



DIN chassis socket, right angle version, for printed circuit boards

State: Phasing out

01 WB

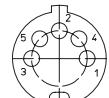


Electrical data (at T_{amb} 20 °C)

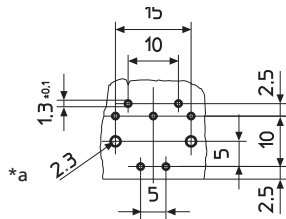
Rated current	4 A
Rated voltage	34 V DC 24 V AC

Pin configuration and printed circuit board layouts

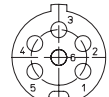
DIN 41524



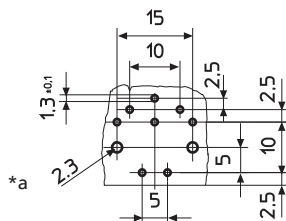
WB 51



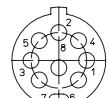
DIN 45322



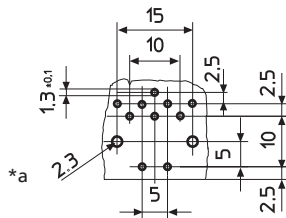
WB 61



DIN 45326



WB 81



*a holes for additional fixing screws 2.2 x 6.5 mm

01

WB

Designation	Pole Number	PU (Pieces)	MDQ (Pieces)
WB 51	5	500	500
WB 61	6	500	500
WB 81	8	500	500