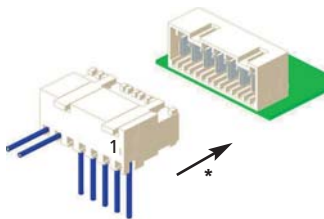
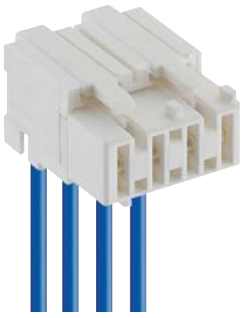
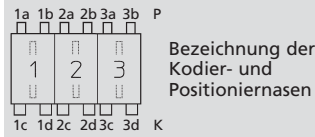


Kodierungen nach RAST 5 für Macromodul-Steckverbinder 3625
Keyings according to RAST 5 for Macromodul connector 3625
Codages suivant RAST 5 pour connecteurs Macromodul 3625



3625

Für diesen Steckverbinder schlägt Lumberg die unten dargestellten Kodierungen vor. Weitere Kodierungen sind auf Anfrage möglich.



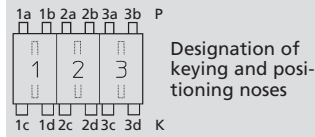
Steckweise indirekt, mit RAST-5-Stiftleiste:

Kodierung durch Kodiernasen am Steckverbinder und entsprechende Öffnungen an der Stiftleiste

Alle Zeichnungen in Steckrichtung (*) gesehen

3625

For this connector, Lumberg proposes the keyings listed below. Further keyings are possible on request.



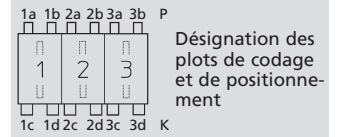
Indirect connection, with RAST 5 pin header:

Keying by means of keying noses at the connector and matching gaps at the pin header

All drawings in view of mating direction (*)

3625

Pour ce connecteur Lumberg propose les codages ci-dessous. Autres codages sont possibles sur demande.



Connexion indirecte, avec réglette à broches RAST 5 :

Codage par plots de codage au connecteur et ouvertures correspondantes à la réglette à broches

Tous dessins vus dans le sens d'enfichage (*)

1

1-polig
 1 pole
 1 pôle

3625 01 K00



Kodierung/keying/codage:
 P 1ab, K 1cd

3625 01 K01

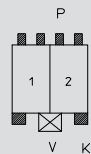


Kodierung/keying/codage:
 P 1ab, K 1d

2

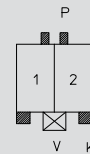
2-polig
 2 poles
 2 pôles

3625 02 K00



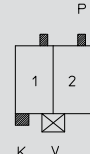
Kodierung/keying/codage:
 P 1ab 2ab, K 1c 2d, V 1/2

3625 02 K01



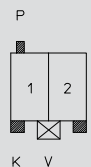
Kodierung/keying/codage:
 P 1b 2a, K 1c 2d, V 1/2

3625 02 K09



Kodierung/keying/codage:
 P 1b 2b, K 1c, V 1/2

3625 02 K12

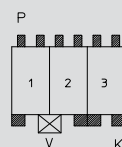


Kodierung/keying/codage:
 P 1a, K 1c 2d, V 1/2

3

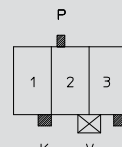
3-polig
 3 poles
 3 pôles

3625 03 K00



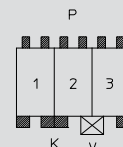
Kodierung/keying/codage:
 P 1ab 2ab 3ab, K 1c 2d 3cd, V 1/2

3625 03 K44



Kodierung/keying/codage:
 P 2a, K 1d 3d, V 2/3

3625 03 K90

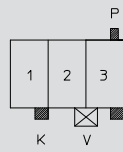


Kodierung/keying/codage:
 P 1ab 2ab 3ab, K 1cd 2c 3d, V 2/3

3

3-polig (Fortsetzung)
 3 poles (continued)
 3 pôles (suite)

3625 03 K101

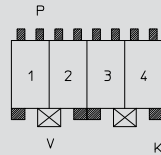


Kodierung/keying/codage:
 P 3b, K 1d 3d, V 2/3

4

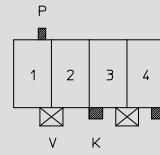
4-polig
 4 poles
 4 pôles

3625 04 K00



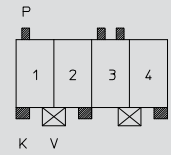
Kodierung/keying/codage:
 P 1ab 2ab 3ab 4ab, K 1c 2d 3c 4d,
 V 1/2 3/4

3625 04 K01



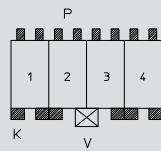
Kodierung/keying/codage:
 P 1b, K 3c 4d, V 1/2 3/4

3625 04 K32



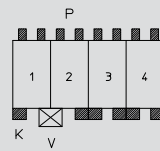
Kodierung/keying/codage:
 P 1a 3ab, K 1c 2d 4d, V 1/2 3/4

3625 04 K90



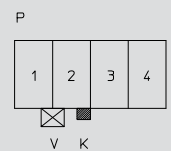
Kodierung/keying/codage:
 P 1ab 2ab 3ab 4ab, K 1cd 2c 3d 4 cd,
 V 2/3

3625 04 K92



Kodierung/keying/codage:
 P 1ab 2ab 3ab 4ab, K 1c 2d 3cd 4 cd,
 V 1/2

3625 04 K127



Kodierung/keying/codage:
 K 2d, V 1/2