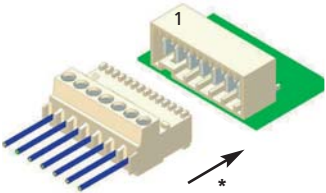
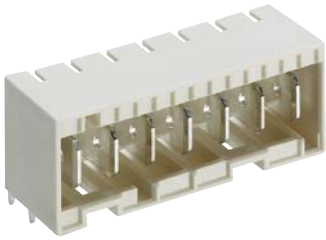
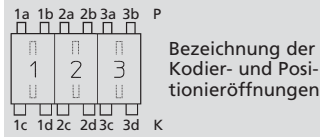


Kodierungen nach RAST 5 für Macromodul-Messerleiste 3645
Keyings according to RAST 5 for Macromodul tab header 3645
Codages suivant RAST 5 pour réglette à couteaux Macromodul 3645



3645

Für diese Messerleiste schlägt Lumberg die unten dargestellten Kodierungen vor. Weitere Kodierungen sind auf Anfrage möglich.



Bezeichnung der Kodier- und Positionieröffnungen

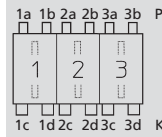
Steckweise indirekt, mit RAST-5-Steckverbinder:

Kodierung durch Kodiernasen am Steckverbinder und entsprechende Öffnungen an der Messerleiste

Alle Zeichnungen in Steckrichtung (*) gesehen

3645

For this tab header, Lumberg proposes the keyings listed below. Further keyings are possible on request.



Designation of keying and positioning gaps

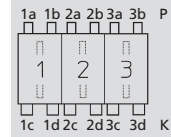
Indirect connection, with RAST 5 connector:

Keying by means of keying noses at the connector and matching gaps at the tab header

All drawings in view of mating direction (*)

3645

Pour cette réglette à couteaux Lumberg propose les codages ci-dessous. Autres codages sont possibles sur demande.



Désignation des ouvertures de codage et de positionnement

Connexion indirecte, avec connecteur RAST 5 :

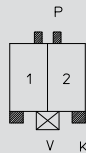
Codage par plots de codage au connecteur et ouvertures correspondantes à la réglette à couteaux

Tous dessins vus dans le sens d'enfichage (*)

2

2-polig
2 poles
2 pôles

3645 02 K01

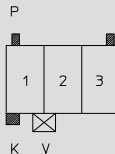


Kodierung/keying/codage:
P 1b 2a, K 1c 2d, V 1/2

3

3-polig
3 poles
3 pôles

3645 03 K06

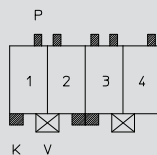


Kodierung/keying/codage:
P 1a 3b, K 1c, V 1/2

4

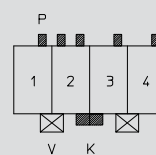
4-polig
4 poles
4 pôles

3645 04 K29



Kodierung/keying/codage:
P 1b 2a 3ab 4b, K 1c 2d 3c, V 1/2 3/4

3645 04 K63

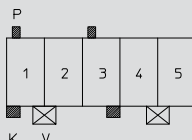


Kodierung/keying/codage:
P 1b 2ab 3b 4b, K 2d 3c, V 1/2 3/4

5

5-polig
5 poles
5 pôles

3645 05 K30

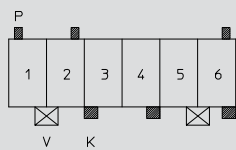


Kodierung/keying/codage:
P 1a 3a, K 1c 3d, V 1/2 4/5

6

6-polig
 6 poles
 6 pôles

3645 06 K35

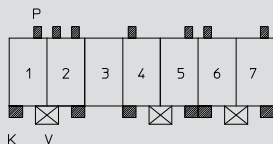


Kodierung/keying/codage:
 P 1a 2b 6b, K 3c 4d 6d, V 1/2 5/6

7

7-polig
 7 poles
 7 pôles

3645 07 K19

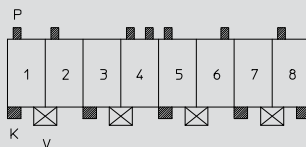


Kodierung/keying/codage:
 P 1b 2ab 4a 5b 6a 7b, K 1c 2d 4c 5d
 6c 7d, V 1/2 4/5 6/7

8

8-polig
 8 poles
 8 pôles

3645 08 K32

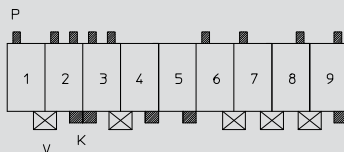


Kodierung/keying/codage:
 P 1a 2a 4ab 5a 6b 8a, K 1c 3c 5c 7c 8d, V 1/2 3/4 5/6 7/8

9

9-polig
 9 poles
 9 pôles

3645 09 K30

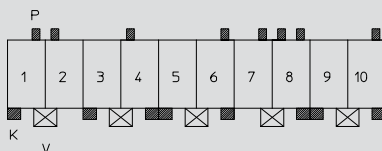


Kodierung/keying/codage:
 P 1a 2ab 3ab 6a 7a 8b 9b, K 2d 3c 4d 5d 9d, V 1/2 3/4 6/7 7/8 8/9

10

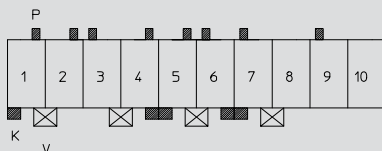
10-polig
 10 poles
 10 pôles

3645 10 K53



Kodierung/keying/codage:
 P 1b 2a 4a 6b 7b 8ab 10b, K 1c 3c 4d 5c 6d 8d 9c, V 1/2 3/4 5/6 7/8 9/10

3645 10 K54

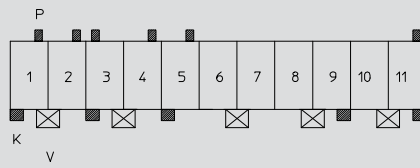


Kodierung/keying/codage:
 P 1b 2b 3a 4b 5b 6a 7a 9a, K 1c 4d 5c 6d 7c, V 1/2 3/4 5/6 7/8

11

11-polig
11 poles
11 pôles

3645 11 K55



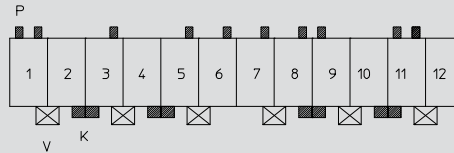
Kodierung/keying/codage:

P 1b 2b 3a 4b 5b 11b, K 1c 3c 5c 9d 11d, V 1/2 3/4 6/7 8/9 10/11

12

12-polig
12 poles
12 pôles

3645 12 K48



Kodierung/keying/codage:

P 1ab 3b 6b 7b 8b 9a 11ab, K 2d 3c 4d 5c 8d 9c 10d 11c, V 1/2 3/4 5/6 7/8 9/10 11/12