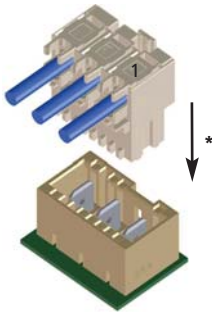
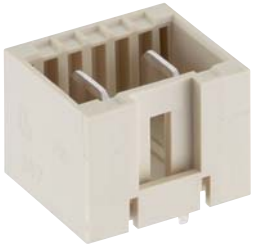
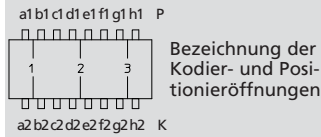


Kodierungen für RAST-7.5-Power™-Steckverbinder 3695
Keyings for RAST 7.5 Power™ connector 3695
Codages pour connecteur RAST 7.5 Power™ 3695



3695

Für diese Messerleiste schlägt Lumberg die unten dargestellten Kodierungen vor. Weitere Kodierungen sind auf Anfrage möglich.

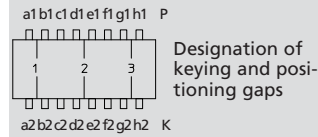


Steckweise indirekt, mit RAST-7.5-Power™-Steckverbinder:
 Kodierung durch Kodiernasen am Steckverbinder und entsprechende Öffnungen an der Messerleiste

Alle Zeichnungen in Steckrichtung (*) gesehen

3695

For this tab header, Lumberg proposes the keyings listed below. Further keyings are possible on request.

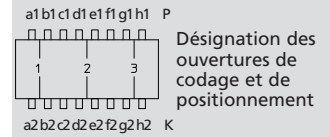


Indirect connection, with RAST 7.5 Power™ connector:
 Keying by means of keying noses at the connector and matching gaps at the tab header

All drawings in view of mating direction (*)

3695

Pour cette réglette à couteaux Lumberg propose les codages ci-dessous. Autres codages sont possibles sur demande.



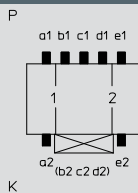
Connexion indirecte, avec connecteur RAST 7.5 Power™ :
 Codage par plots de codage au connecteur et ouvertures correspondantes à la réglette à couteaux

Tous dessins vus dans le sens d'enfichage (*)

2

2-polig
 2 poles
 2 pôles

3695 02 K00

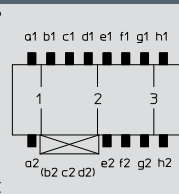


Kodierung/keying/codage:
 P a1 b1 c1 d1 e1, K a2 e2, V 1/2

3

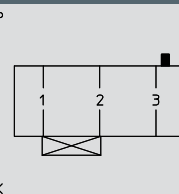
3-polig
 3 poles
 3 pôles

3695 03 K00



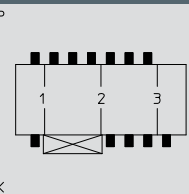
Kodierung/keying/codage:
 P a1 b1 c1 d1 e1 f1 g1 h1, K a2 e2 f2 g2 h2, V 1/2

3695 03 K01



Kodierung/keying/codage:
 P h1, V 1/2

3695 03 K02

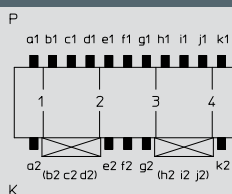


Kodierung/keying/codage:
 P a1 b1 c1 d1 e1 f1 g1, K a2 e2 f2 g2 h2, V 1/2

4

4-polig
 4 poles
 4 pôles

3695 04 K00



Kodierung/keying/codage:
 P a1 b1 c1 d1 e1 f1 g1 h1 i1 j1 k1,
 K a2 e2 f2 g2 k2, V 1/2, 3/4