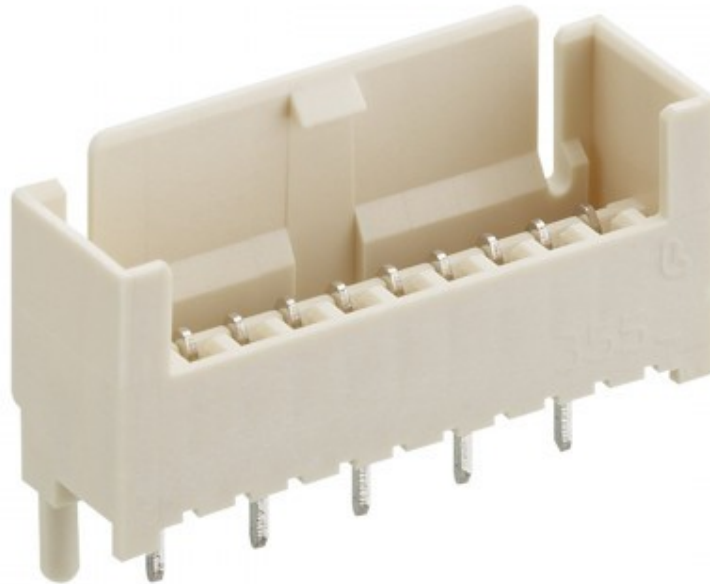
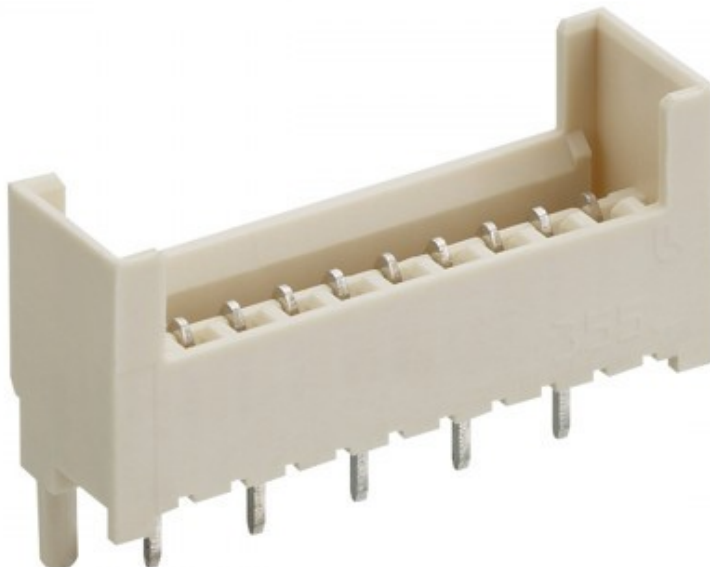


## 3550 / 3552 (not illustrated)



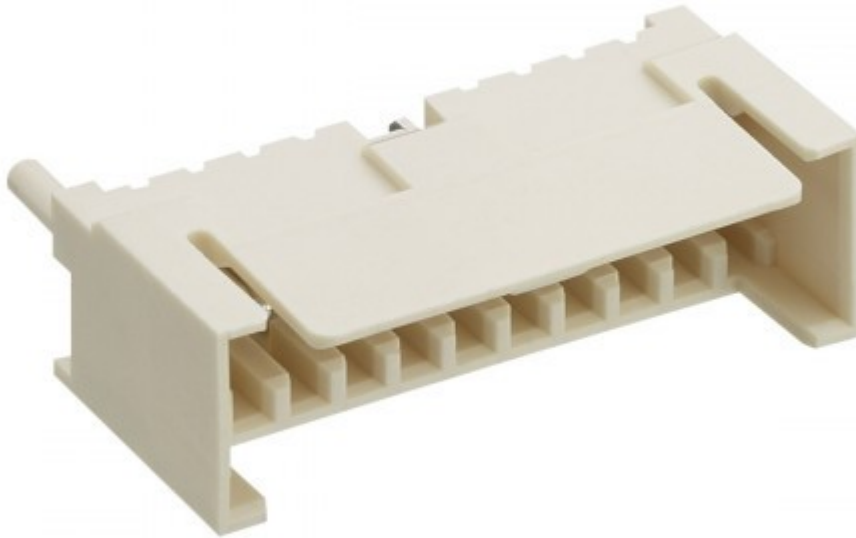
## 3551 / 3553 (not illustrated)



	Date	Name	Edition	1	2	3	4	5	6
Author	15.01.13	sve	Name	fs	jham	fs			
Checked	25.04.25	ritsch	Date	30.06.21	09.09.24	23.04.25			

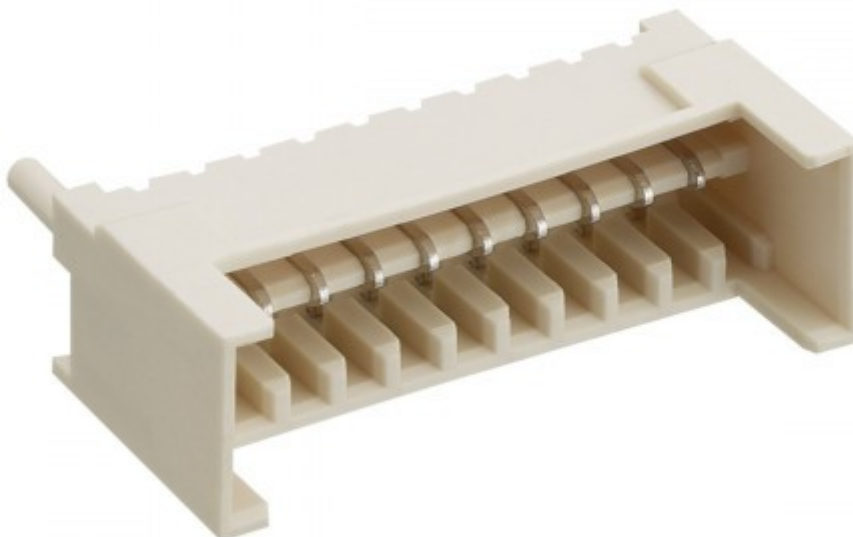
## **3554 / 3556**

(not illustrated)

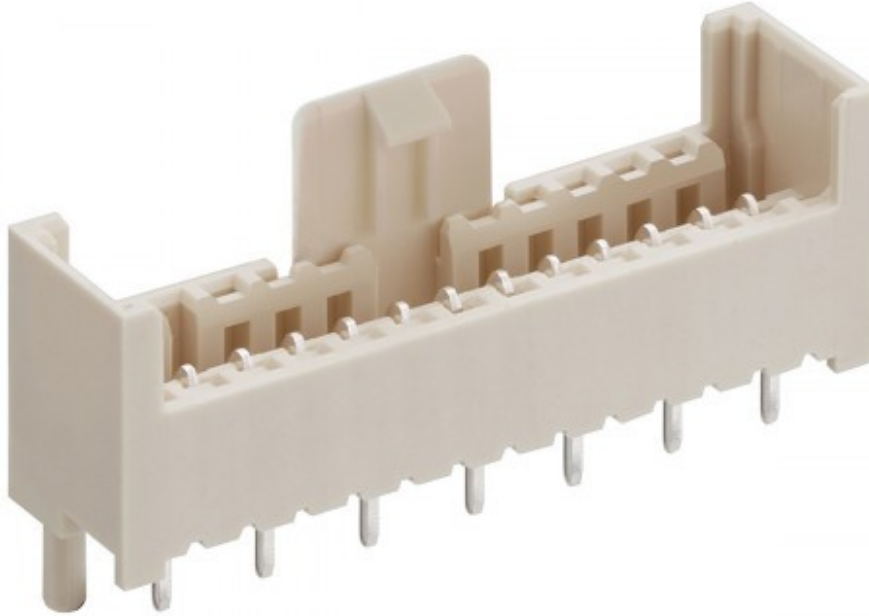


## **3555 / 3557**

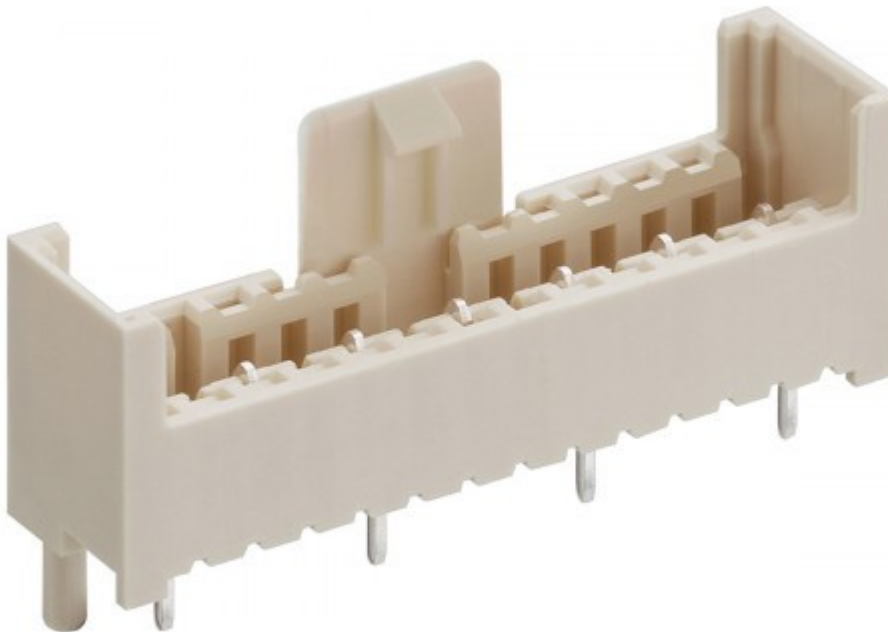
(not illustrated)



## 355099



## 355299





## Contents

<b>1. Product description.....</b>	<b>6</b>
1.1. Product types.....	6
Pin header 3550.....	6
Pin header 3552.....	6
Pin header 3551.....	7
Pin header 3553.....	7
Pin header 3554.....	8
Pin header 3556.....	8
Pin header 3557.....	9
Pin header 355099.....	10
Pin header 355299.....	10
<b>2. System features.....</b>	<b>11</b>
<b>3. Principle of contact.....</b>	<b>13</b>
<b>4. Coding.....</b>	<b>14</b>
4.1. Coding according to RAST 2.5.....	14
4.2. Double-side coding.....	14
<b>5. Processing.....</b>	<b>15</b>
5.1. Soldering profile.....	15
5.2. Delivery.....	15
5.3. Hold-down plate.....	15
5.4. Clinching.....	15
5.5. Housing.....	15
<b>6. Quality assurance.....</b>	<b>16</b>
6.1. Quality characteristics.....	16
6.2. Press in depth of contacts.....	16
6.3. Holding force of the contact pin in the contact carrier.....	16
<b>7. Terms of storage.....</b>	<b>17</b>

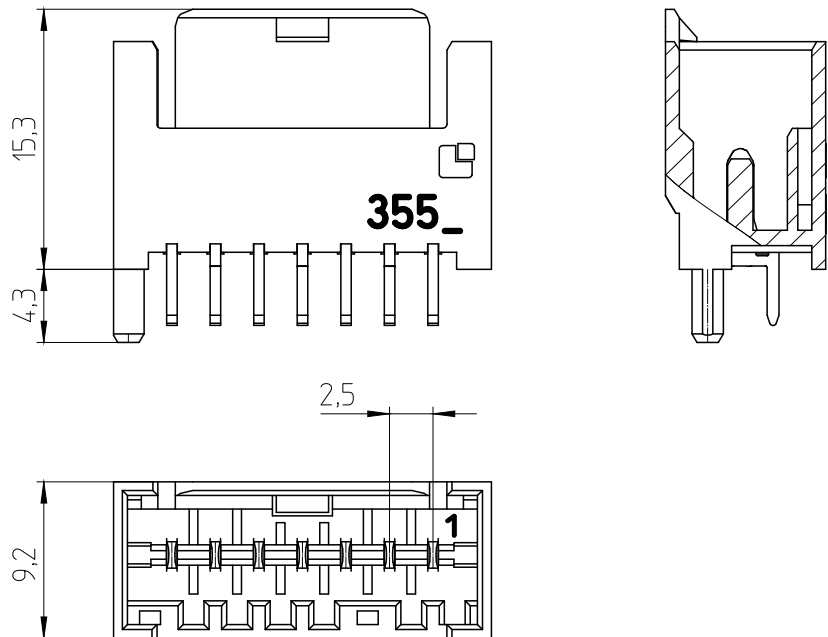
## 1. Product description

### 1.1. Product types

Pin header according to RAST 2.5 – Standard

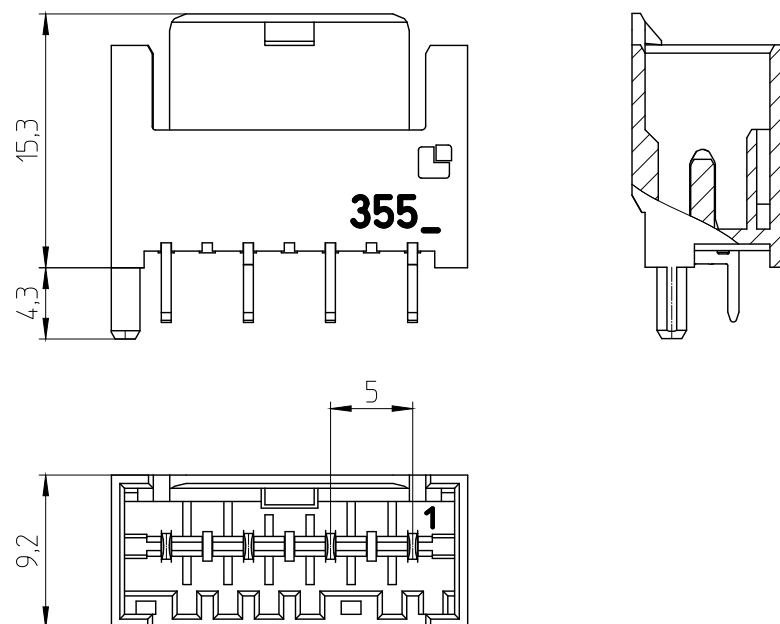
#### Pin header 3550

Pitch 2,5 mm  
acc. to data sheet 3550 01



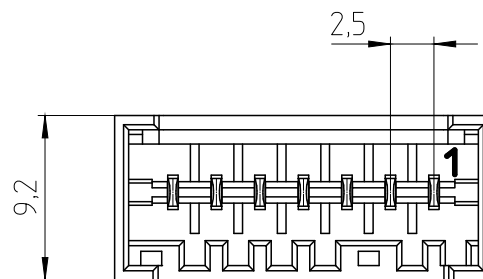
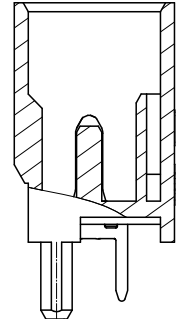
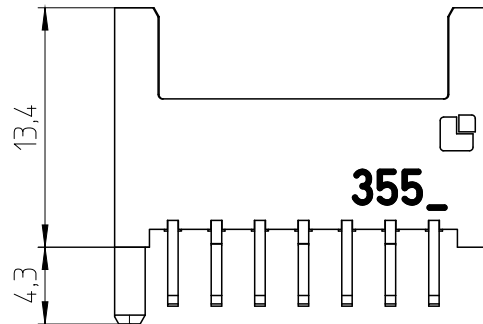
#### Pin header 3552

Pitch 5,0 mm  
acc. to data sheet 3552 01



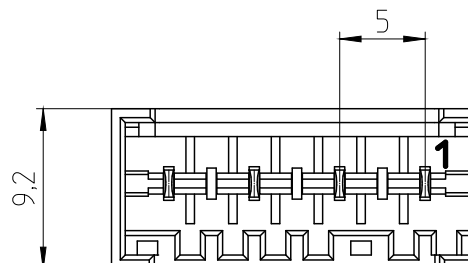
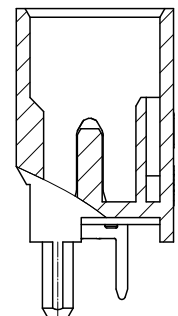
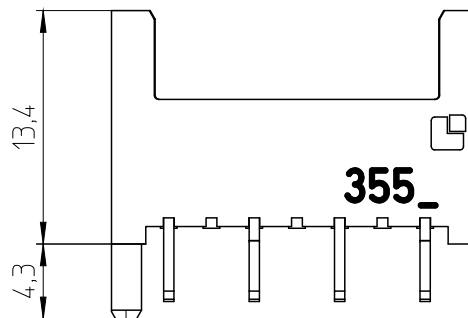
### Pin header 3551

Pitch 2,5 mm  
acc. to data sheet 3551 01



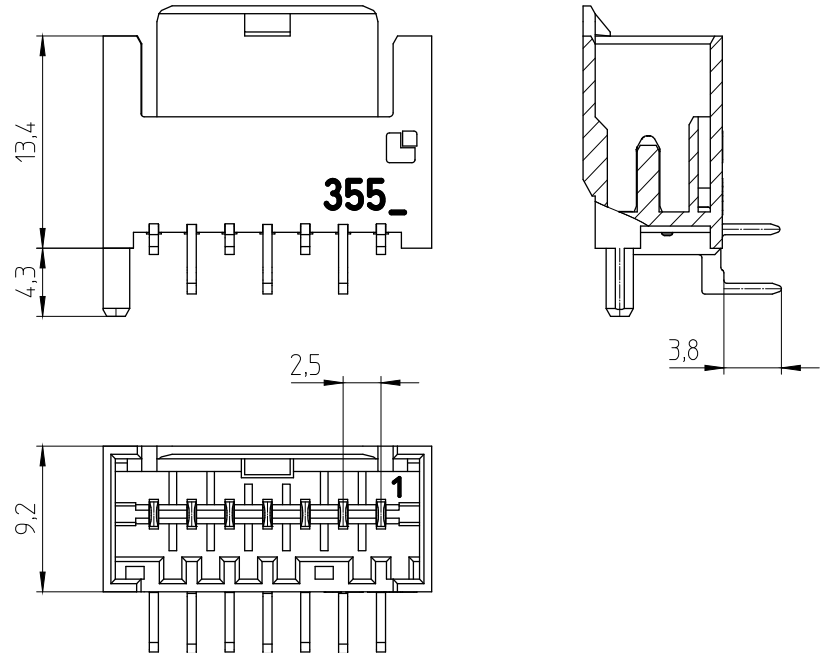
### Pin header 3553

Pitch 5,0 mm  
acc. to data sheet 3553 01



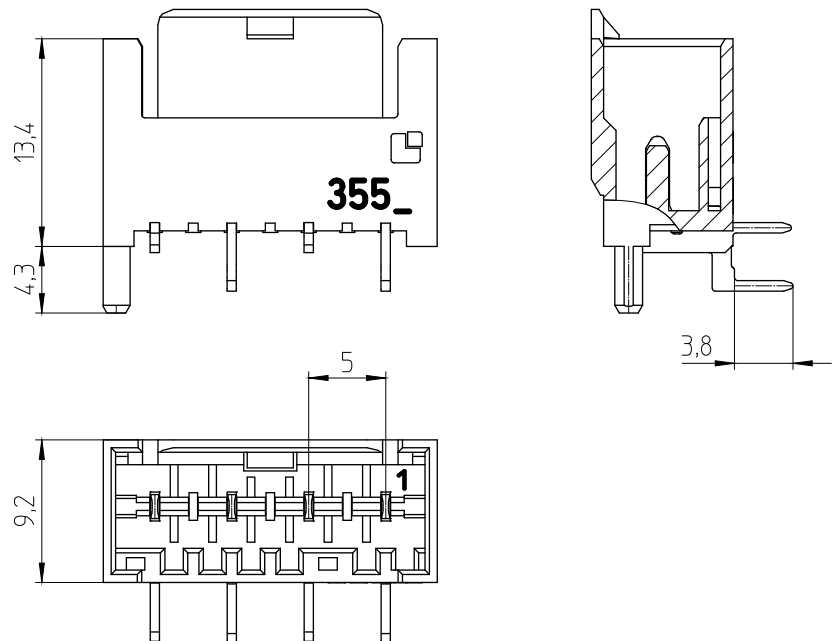
### Pin header 3554

Pitch 2,5 mm  
acc. to data sheet 3554 01



### Pin header 3556

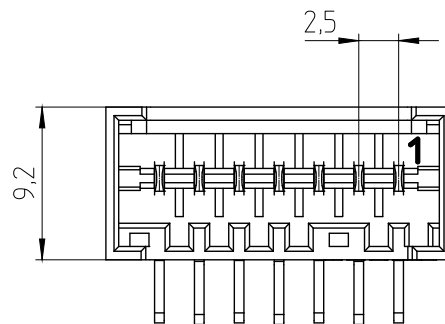
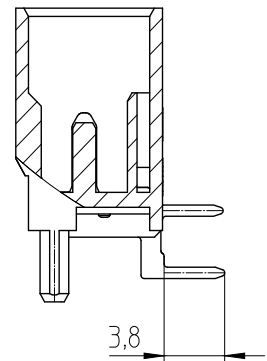
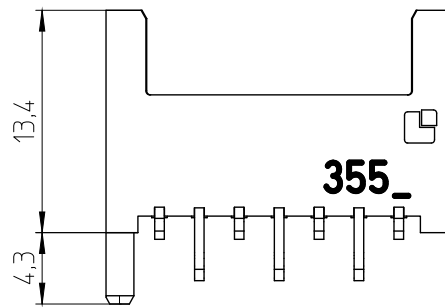
Pitch 5,0 mm  
acc. to data sheet 3556 01





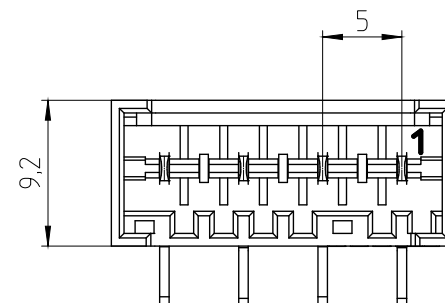
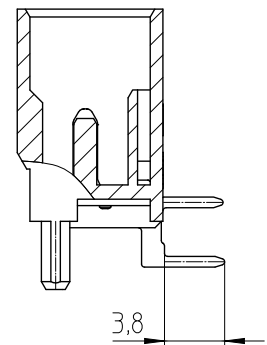
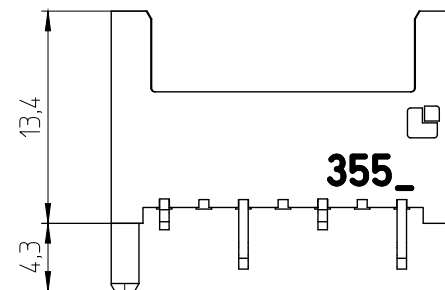
### Pin header 3555

Pitch 2,5 mm  
acc. to data sheet 3555 01



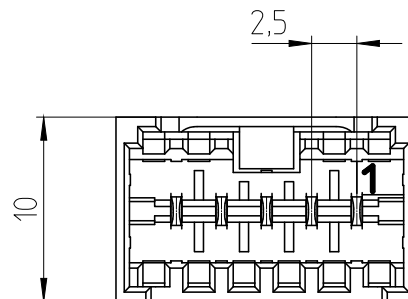
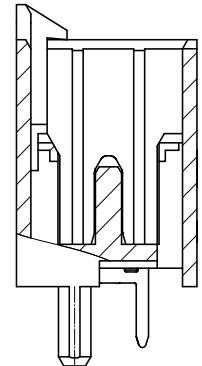
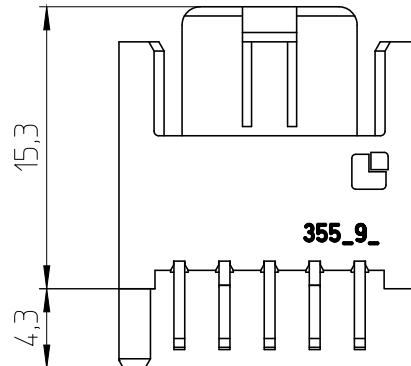
### Pin header 3557

Pitch 5,0 mm  
acc. to data sheet 3557 01



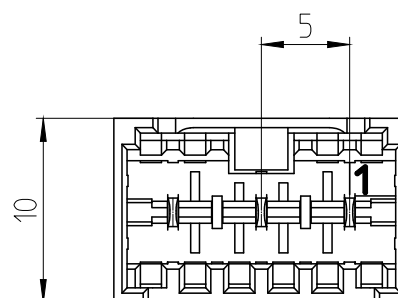
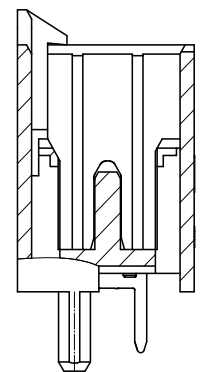
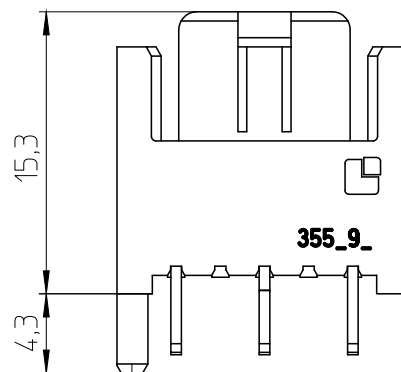
## Pin header 355099

Pitch 2,5 mm  
acc. to data sheet 355099 01  
double-side coding

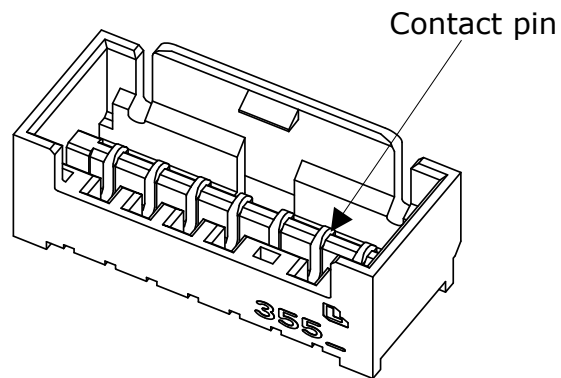


## Pin header 355299

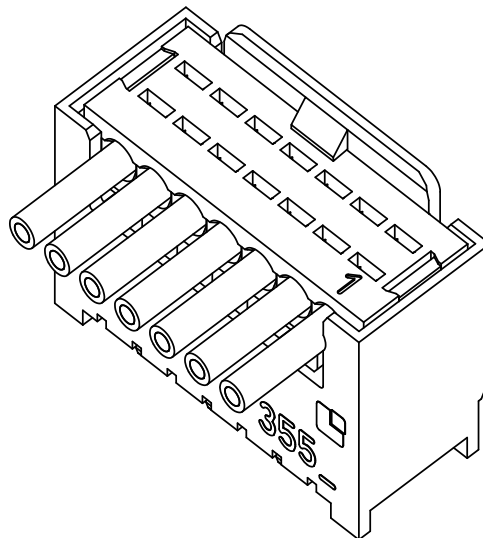
Pitch 5,0 mm  
acc. to data sheet 355299 01  
double-side coding



## 2. System features

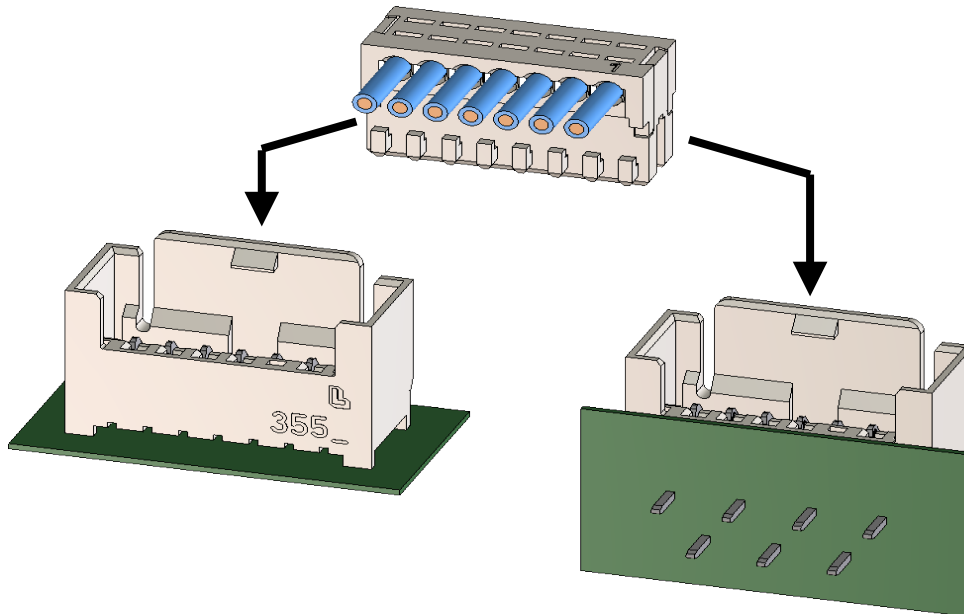


RAST 2.5 – plug inserted in pin header



The plugs are used together with pin headers as indirect connectors or with guide frames as direct connectors (edge plugs).

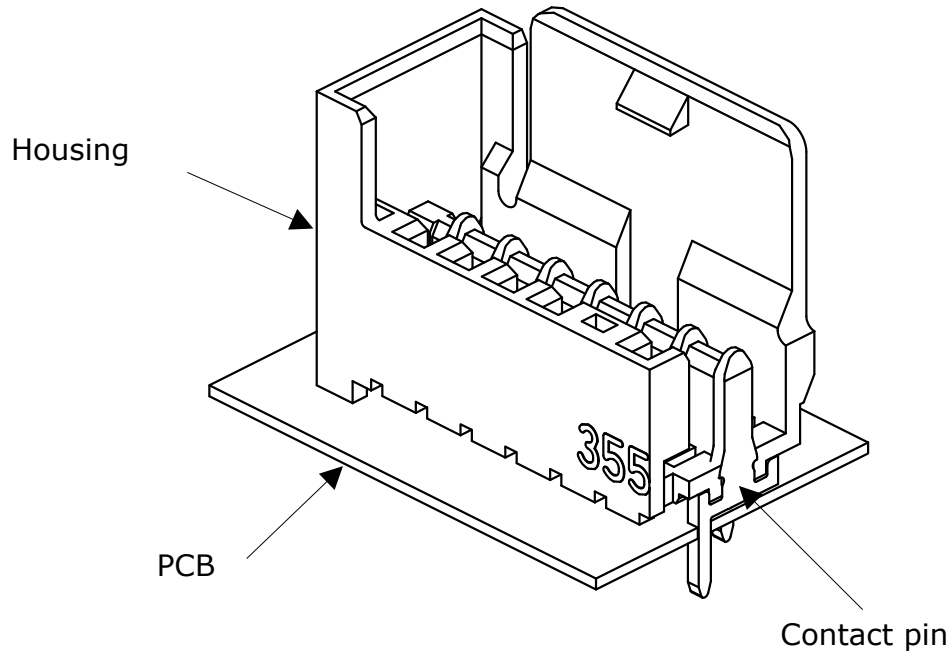
Plug, according to RAST 2.5



Type 3550

Type 3554

## 3. Principle of contact

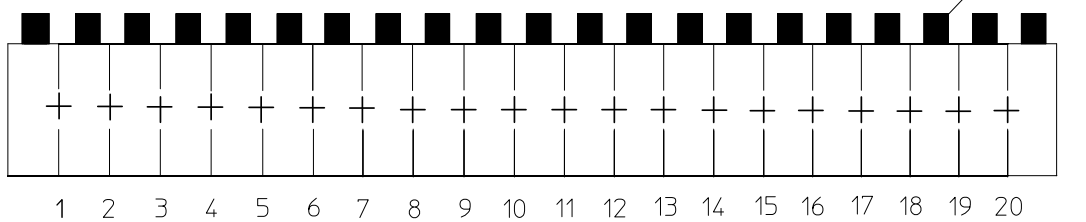


## 4. Coding

The coding is implemented according to the RAST 2.5 Standard.

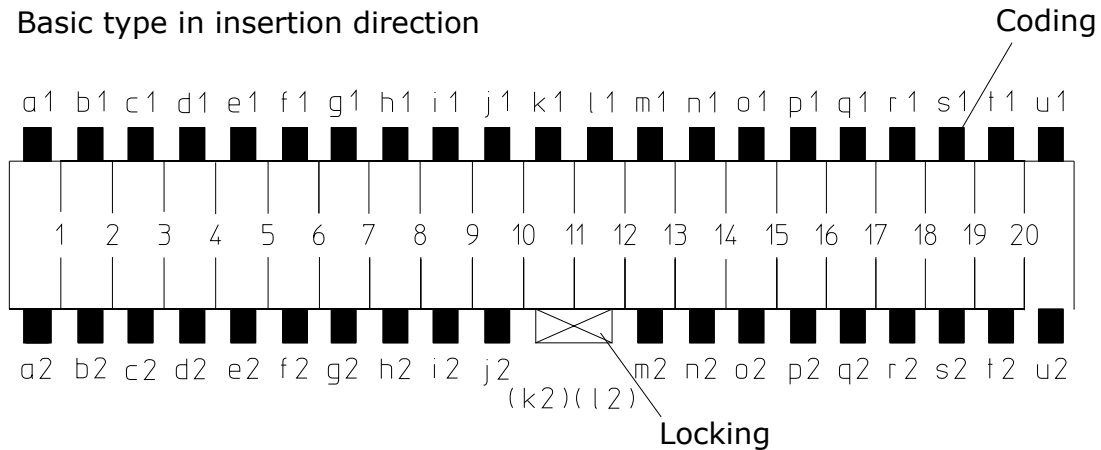
### 4.1. Coding according to RAST 2.5

Basic type in insertion direction



### 4.2. Double-side coding

Basic type in insertion direction



## 5. Processing

The pole count, pin-out assignment and PCB layout (see technical data sheet) must all match.

### 5.1. Soldering profile

The soldering profiles are available on our website at [www.lumberg.com/main/download/special/Loetprofile\\_DE\\_EN.pdf](http://www.lumberg.com/main/download/special/Loetprofile_DE_EN.pdf).

### 5.2. Delivery

The pin headers are delivered in bulk packaging or, optionally, in loading tubes.

### 5.3. Hold-down plate

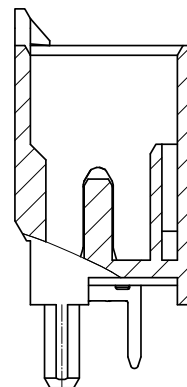
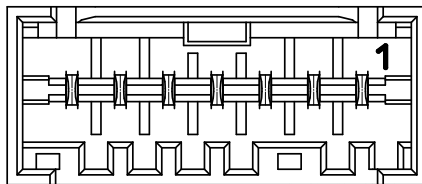
We recommend using a hold-down plate with the components so that they do not rise up.

When using lubricants, no residues (impurities) may be left on the pin headers (especially not on the contact pins).

### 5.4. Clinching

We recommend in principle not to clinch our contacts. If, in case of disregard, clinching is executed it is at the processing organization's responsibility to ensure correct function of the components.

### 5.5. Housing



The housing should not show any visible signs of damage following the assembly or soldering process (using a visual inspection).

The plug-in function must be confirmed (we recommend a test of function).

The contact blade must be correctly positioned in the housing (using a visual inspection, for example).

## 6. Quality assurance

For all working and processing steps and alterations (e.g. product launch, changes of the wire, changes of the tool or machine ...), which may affect the product quality, the responsible departments have to take care for appropriate quality assurance steps.

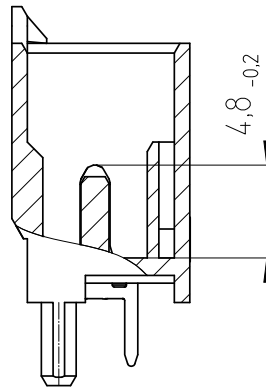
### 6.1. Quality characteristics

The following quality characteristics should be considered:

Lumberg will ensure that there is compliance with the RAST 2.5 directive..

### 6.2. Press in depth of contacts

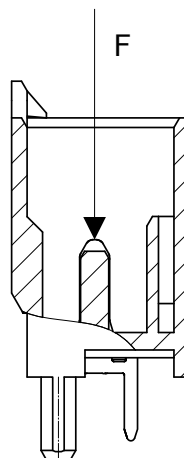
The insertion depth of the contacts is determined by the height of the contact carrier.



### 6.3. Holding force of the contact pin in the contact carrier

Minimum push-out force for the contact pin out of the contact carrier

$F > 20\text{N}$  / contact pin





<p>LUMBERG CONNECT GMBH</p> <p>Im Gewerbepark 2 58579 Schalksmühle</p>	<h1>Processing instruction</h1>	 <p>passion for connections</p>
	<p><b>Pin header RAST 2.5</b></p>	<p><b>355V01EN</b></p> <p>Page 17 of 17</p>

## 7. Terms of storage

The general terms and conditions of storage are available on the internet under Downloads at [www.lumberg.com](http://www.lumberg.com). The specified terms of storage must be complied with.