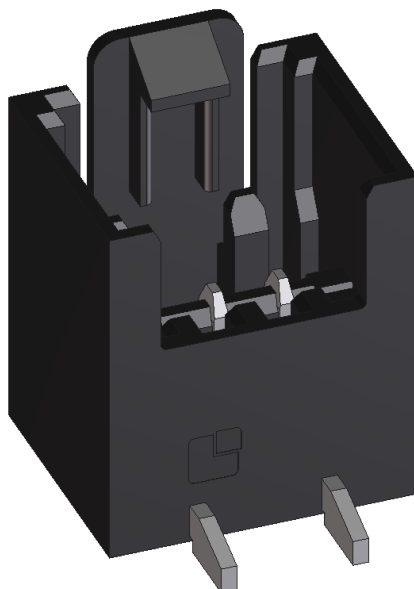
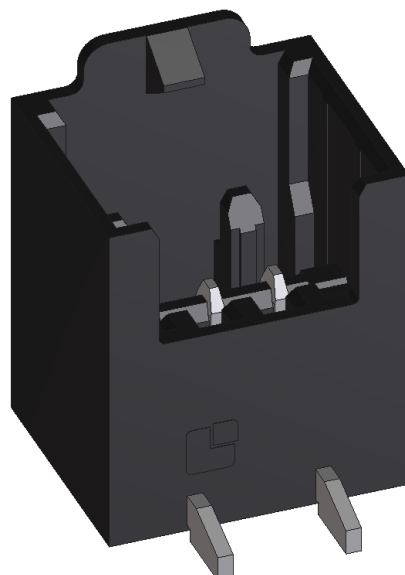


355X95...



355X95 - 1...



	Date	Name	Edition	1	2	3	4	5	6
Author	06.05.22	fs	Name						
Date	06.05.22	ritsch	Date						

Alteration description

[illegible]

Contents

1. Handling.....	4
1.1. Pin header packaging.....	4
1.2. Connector.....	5
1.2.1. Disconnect connector.....	5
1.2.2. Insert obliquely with negative consequences.....	7
2. Processing.....	8
2.1. Soldering profile.....	8
2.2. Delivery.....	8
2.3. Housing.....	8
3. Storage.....	9

1. Handling

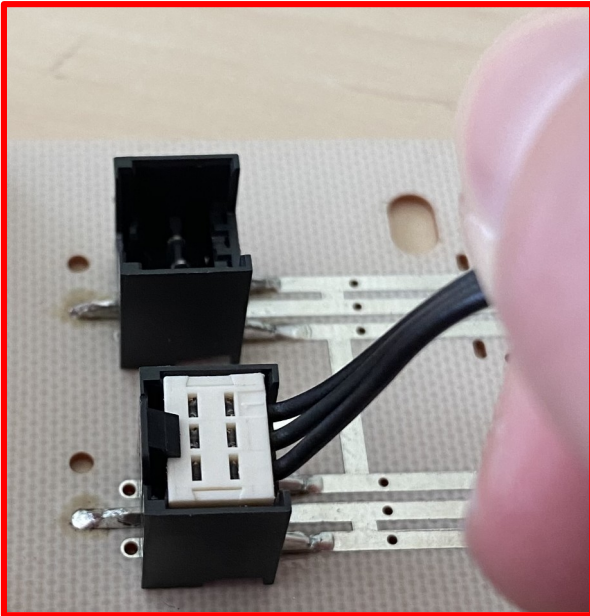
1.1. Pin header packaging

- Always stack the packaging on the large surface
- Before use, the product should be stored for 24 hours at room temperature 21 – 25 °C with less than 55% humidity.
- Pay attention for the correct position during the entire transport route
- Cartons must be handled with care when being transported from the shipping pallet to the storage rack.
- Lumberg accepts no responsibility for cartons that fall from too great a height or are dropped at excessive heights.



1.2. Connector

1.2.1. Disconnect connector

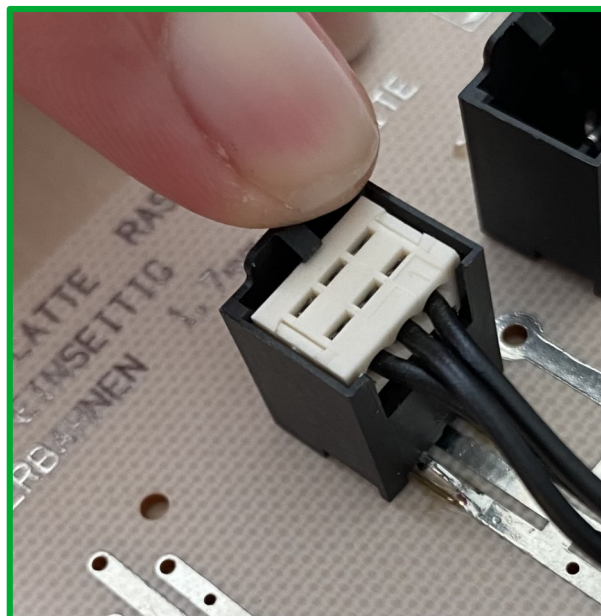
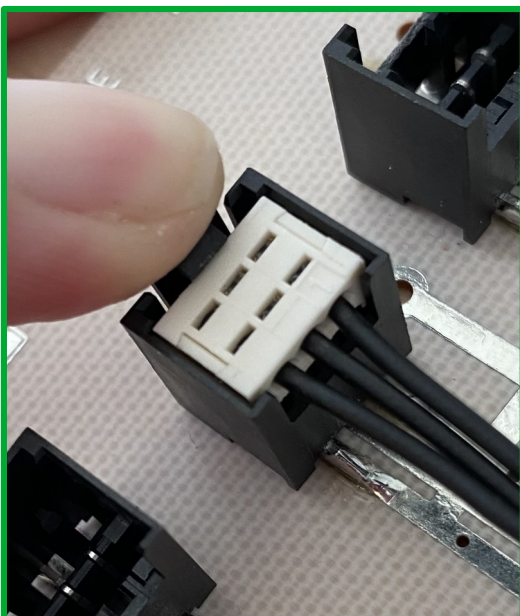


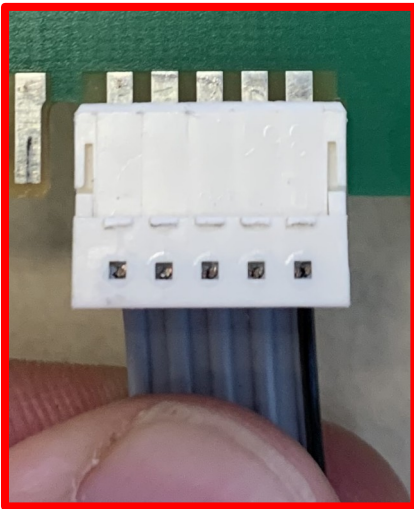
Error description:

- Connector is gripped without pressing the locking latch on the housing

Corrective action:

- Press the locking latch and then disconnect the plug



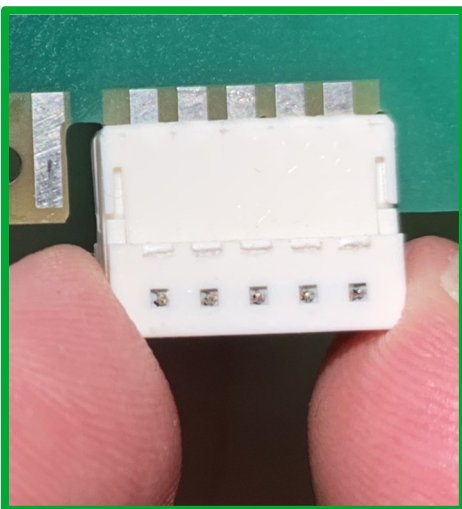


Error description:

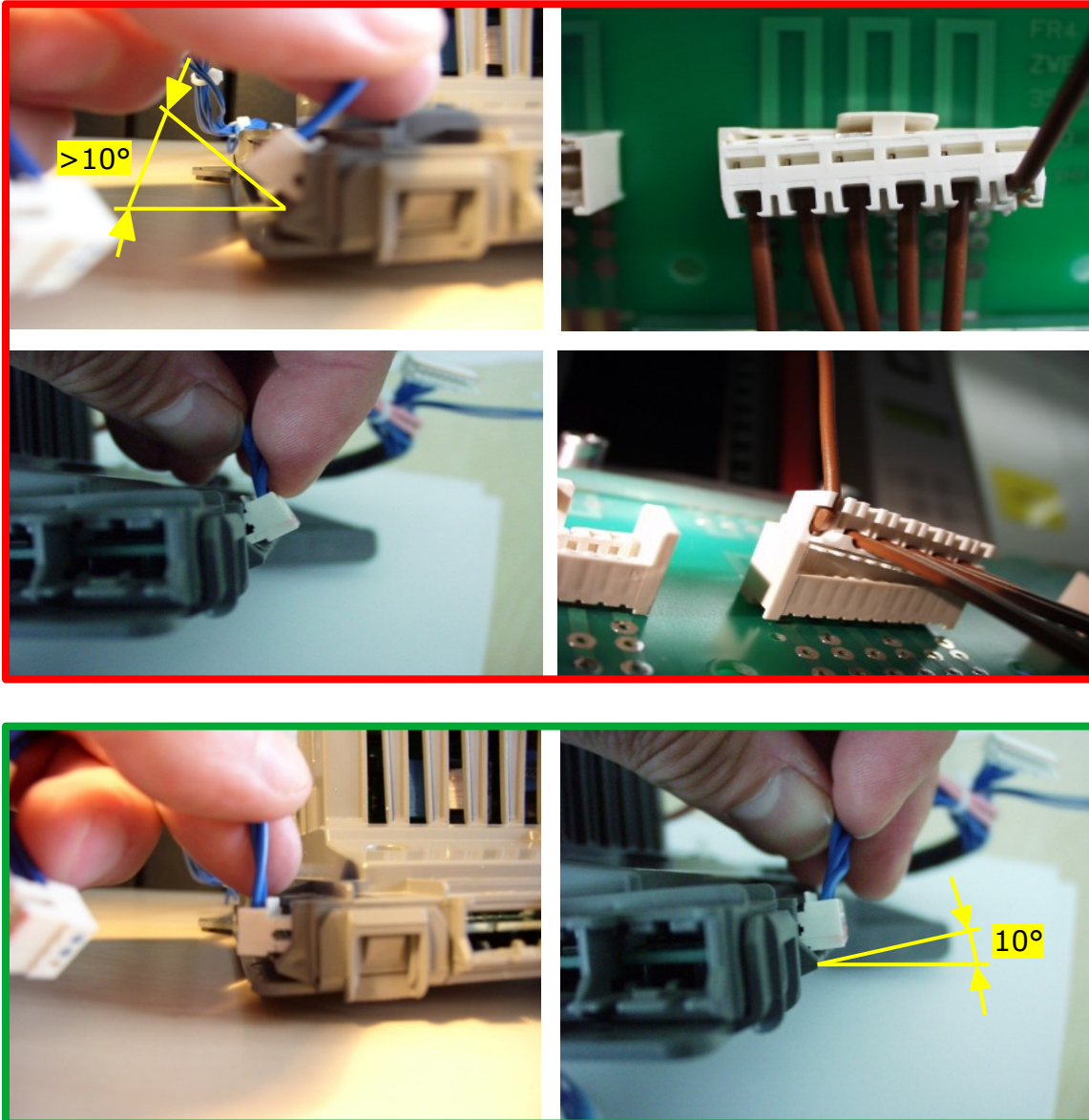
- Connector is unplugged at the wire, although it would be possible to unplug on the housing

Corrective action:

- If possible, touch the connector by the housing



1.2.2. Insert obliquely with negative consequences



Possible fault consequences:

- System failure
- Contact deformation
- Wire / strand breakage
- Damage to / in the contact carrier or to / in the housing

2. Processing

The pole count, pin-out assignment and PCB layout (see technical data sheet) must all match.

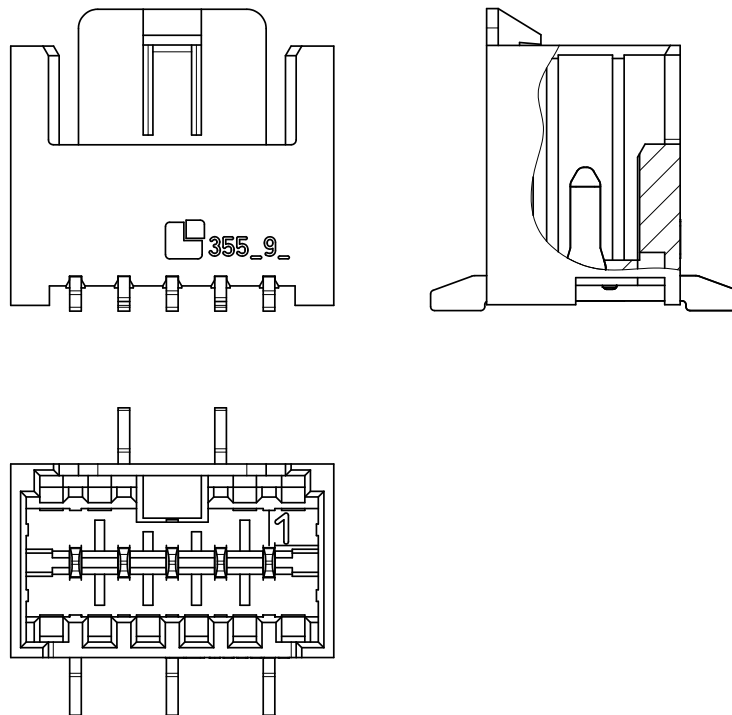
2.1. Soldering profile

The soldering profiles are available on our website at
www.lumberg.com/main/download/special/Loetprofile_DE_EN.pdf.

2.2. Delivery

The pin headers are delivered in blister trays.

2.3. Housing



The housing should not show any visible signs of damage following the assembly or soldering process (using a visual inspection).

The plug-in function must be confirmed (we recommend a test of function).

The contact blade must be correctly positioned in the housing (using a visual inspection, for example).

<p>LUMBERG CONNECT GMBH</p> <p>Im Gewerbepark 2 58579 Schalksmühle</p>	<p>Application specification</p> <p>SMD – Pin header RAST 2.5</p>	<p>Lumberg  passion for connections</p> <p>355X95AS01EN</p> <p>Page 9 of 9</p>
--	---	---

3. Storage

Tin-plated and silver-plated surfaces can undergo a physical aging process that may negatively affect their ability to be soldered. In order maintain the best connection characteristics, make sure that the following instructions are closely followed during additional processing steps:

Storage conditions:

The parts should ideally be stored in the original packaging, at a constant temperature of 21 – 25° C, with a relative humidity of no more than 55%. The components should not be exposed to direct light. They should also be protected from any extreme ambient conditions (such as air pollution).

Due to the physical properties of the parts the storage times should be reduced as short as possible. Silver-plated components have to be processed within half a year and tin-plated components within one year after delivery. For components that are soldered due to their application, it is necessary to use a commercially available suitable flux.

These specifications are based on experience using components stored under optimal conditions. They do not constitute and binding commitment for the fulfillment of any characteristics.

Ask Lumberg for more information about alternative packaging options for other temperatures and environmental conditions.